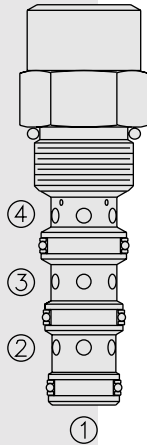


EC50-43 Pressure Compensator, High Pressure



DESCRIPTION

A screw-in, cartridge-style, priority-on-demand, pressure-compensator with a dynamic load sense, intended to provide priority flow in the required amount, while allowing excess flow to be used for auxiliary functions.

OPERATION

With inlet flow at ③, the **EC50-43** will deliver required priority flow at ④, regardless of load pressure. Excess flow exits at ②. Port ① is the load sense port. All ports may be fully pressurized.

FEATURES

- Hardened parts for long life.
- Quiet, modulated response.
- Industry common cavity.

RATINGS

Operating Pressure: Inlet: 345 bar (5000 psi)

Input Flow Rate: 45.4 lpm (12 gpm) maximum

Maximum Regulated Flow: 37.9 lpm (10 gpm) with 10.3 bar (150 psi) compensator spring; 30.2 lpm (8.0 gpm) with 5.5 bar (80 psi) compensator spring

Flow Maintenance: see performance chart

Temperature: -40 to 120°C

Filtration: See page 9.010.1

Fluids: Mineral-based or synthetics with lubricating properties at viscosities of 7.4 to 420 cSt (50 to 2000 sus)

Installation: No restrictions; See page 9.020.1

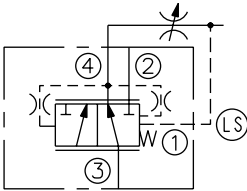
Cavity: VC10-4; See page 9.110.1

Cavity Tool: CT10-4-XXX; See page 8.600.1

Seal Kit: SK10-4P-TMB; See page 8.650.1

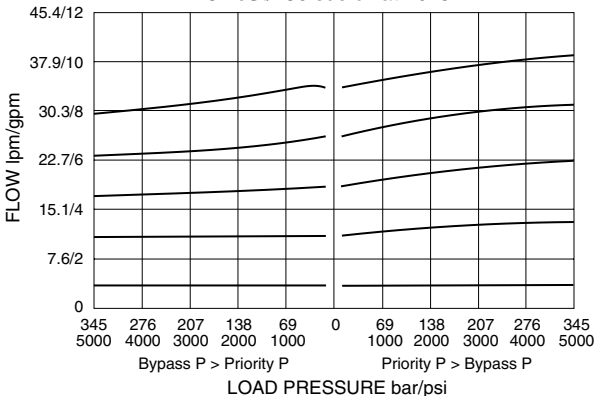
SYMBOLS

USASI/ISO:



PERFORMANCE (Cartridge Only)

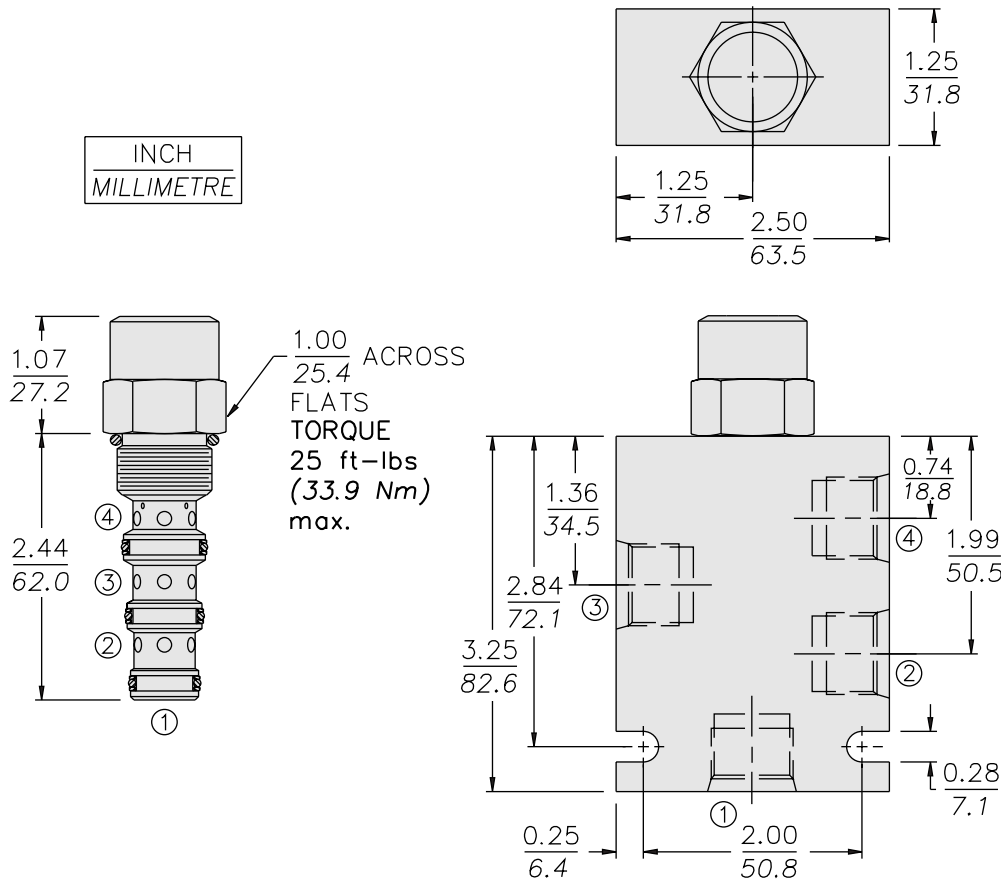
Priority Flow vs. Load
12 gpm Inlet Flow; 150 psi Compensator Spring
32 cSt/150 sus oil at 40°C



with Dynamic Load Sense

EC50-43

DIMENSIONS



MATERIALS

Cartridge: Weight: 0.17 kg. (0.37 lbs.);
Steel with hardened work surfaces.
Zinc-plated exposed surfaces.
Buna N O-rings and polyester
elastomer back-ups standard.

Ported Body: Weight: 0.68 kg.
(1.51 lbs.); Steel, zinc-plated (code
"S"); or **Ductile Iron (code "D")**
standard, consult factory for weight,
dimensions may differ; rated to
345 bar (5000 psi); See page
8.010.1.

TO ORDER

EC50-43 -		Compensator Spring	
Porting		80	5.5 bar (80 psid)
Cartridge Only	0	150	10.3 bar (150 psid)
SAE 6 (Ductile)	6TD		
SAE 6 (Steel)	6TS		
		Seals	
		P	Polyurethane (Std.)