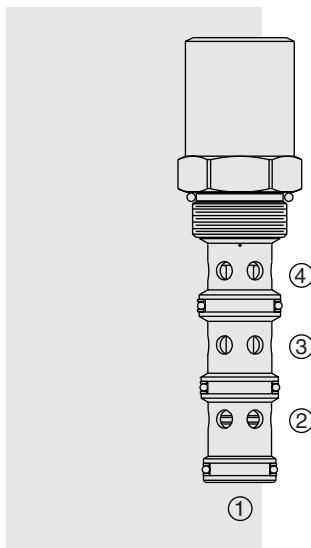


## EC16-42 Pressure Compensator,



### DESCRIPTION

A screw-in, cartridge-style, priority on-demand, pressure-compensating element intended to provide priority flow in required amount while allowing excess flow to be used for auxiliary functions.

### OPERATION

The EC16-42 is a priority-type valve delivering pump flow at port ③. Port ④ will deliver required priority flow regardless of load pressure. Excess flow exits at port ②. Port ① is the load sense port. All ports may be fully pressurized.

### FEATURES

- Hardened parts for long life.
- Quiet, modulated response.
- Industry common cavity.

### RATINGS

**Maximum Operating Pressure:** 240 bar (3500 psi)

**Input Flow:** 190 lpm (50 gpm)

**Priority Flow Rate:** 95 lpm (25 gpm)

**Temperature:** -40 to 120°C with Buna N seals

**Filtration:** See page 9.010.1

**Fluids:** Mineral-based or synthetics with lubricating properties at viscosities of 7.4 to 420 cSt (50 to 2000 ssu)

**Installation:** No restrictions; See page 9.020.1

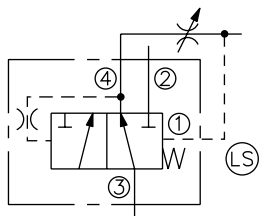
**Cavity:** VC16-4; See page 9.116.4

**Cavity Tool:** CT16-4XX; See page 8.600.1

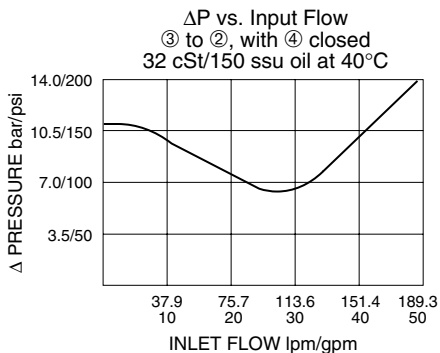
**Seal Kit:** SK16-4X-MMM; See page 8.650.1

### SYMBOLS

#### USASI/ISO:



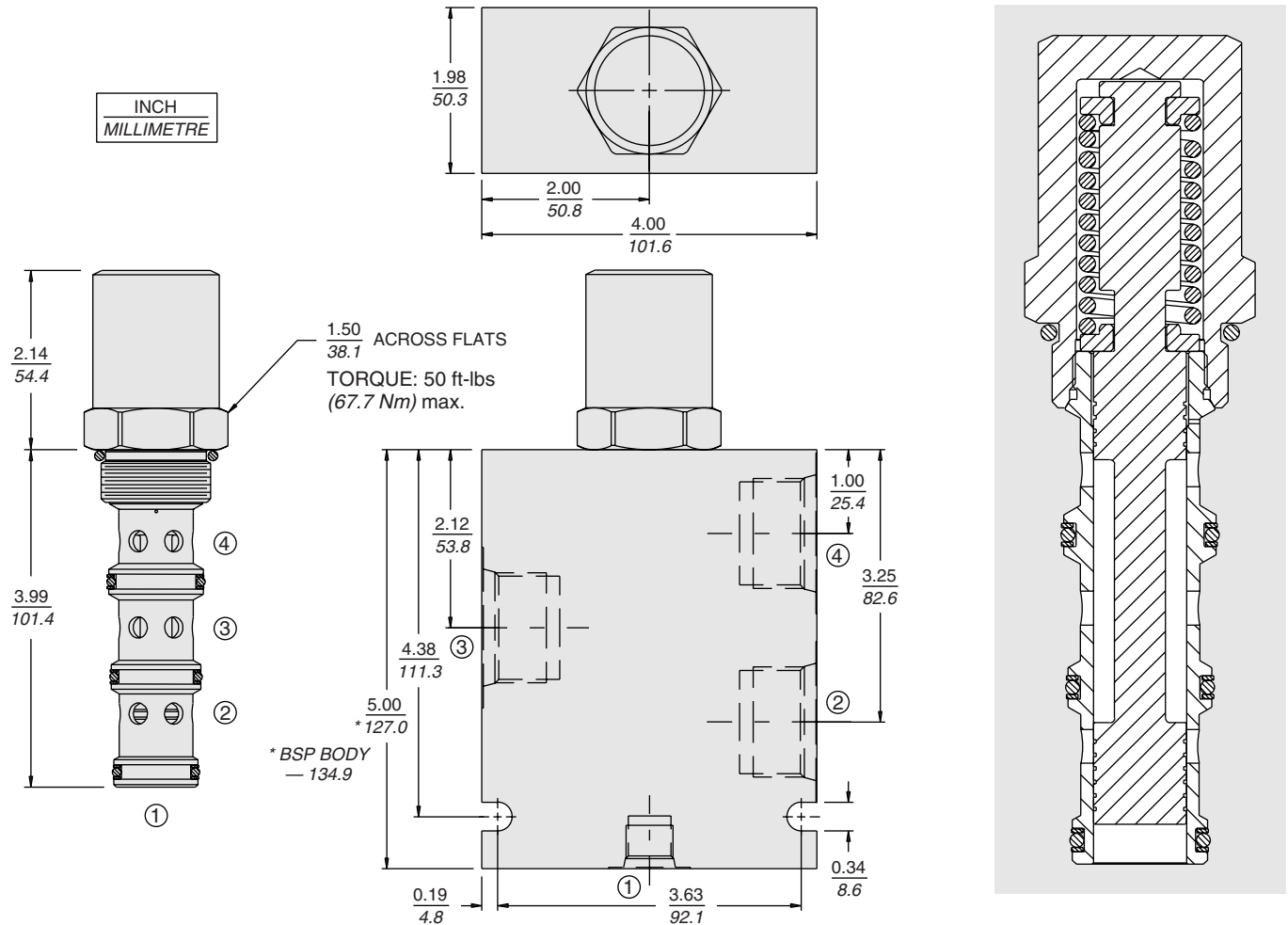
### PERFORMANCE (Cartridge Only)



# with Static Load Sense

# EC16-42

## DIMENSIONS



## MATERIALS

**Cartridge:** Weight: 0.56 kg. (1.23 lbs.); Steel with hardened work surfaces. Zinc-plated exposed surfaces. Buna N O-rings TFE back-ups standard.

**Standard Ported Body:** Weight: 1.50 kg. (3.30 lbs.); Anodized high-strength 6061 T6 aluminum alloy, rated to 240 bar (3500 psi); see page 8.016.1. Ductile iron and steel bodies available; dimensions may differ; consult factory.

## TO ORDER

EC16-42 - - -

### Porting

Cartridge Only **0**  
SAE 12; Port 1: SAE 6 **12T**  
SAE 16; Port 1: SAE 6 **16T**

### Compensator Spring

**80** 5.51 bar (80 psid)  
**150** 10.34 bar (150 psid)

### Seals

**N** Buna N (Std.)  
**V** Fluorocarbon