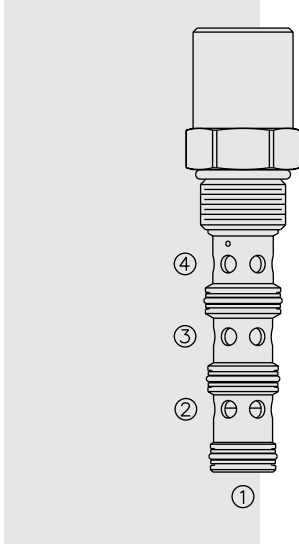


EC12-42 Pressure Compensator



DESCRIPTION

A screw-in, cartridge-style, priority-on-demand, pressure compensator with static load sense intended to provide priority flow in the required amount, while allowing excess flow to be used for auxiliary functions.

OPERATION

With inlet flow at port ③, the **EC12-42** will deliver required priority flow at port ④, based on the size of the external orifice, regardless of load pressure. Excess flow exits, or is bypassed, at port ②. Port ① is the load sense port. All ports may be fully pressurized.

FEATURES

- Hardened parts for long life.
- Quiet, modulated response.
- Industry common cavity.

RATINGS

Operating Pressure: Inlet: 345 bar (5000 psi); Note: Steel body required when used at or near 5000 psi.

Maximum Regulated Flow: 76 lpm (20 gpm) with 160 psi compensating spring; 54.5 lpm (14.4 gpm) with 80 psi compensating spring

Flow Maintenance: See performance chart

Temperature: -40 to 120°C with Buna N seals

Filtration: See page 9.010.1

Fluids: Mineral-based or synthetics with lubricating properties at viscosities of 7.4 to 420 cSt (50 to 2000 sus)

Installation: No restrictions; See page 9.020.1

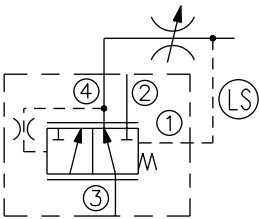
Cavity: VC12-4; See page 9.112.1

Cavity Tool: CT12-4-XXX; See page 8.600.1

Seal Kit: SK12-4X-MMM; See page 8.650.1

SYMBOLS

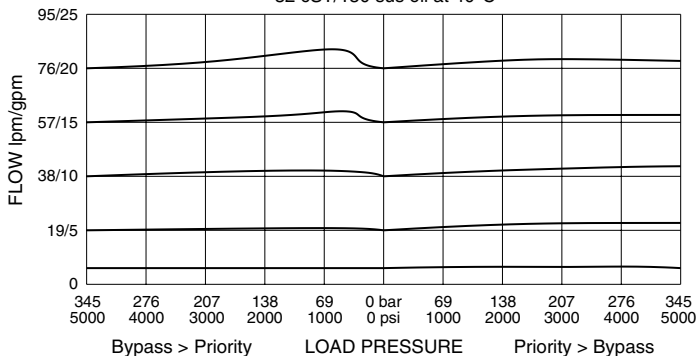
USASI/ISO:



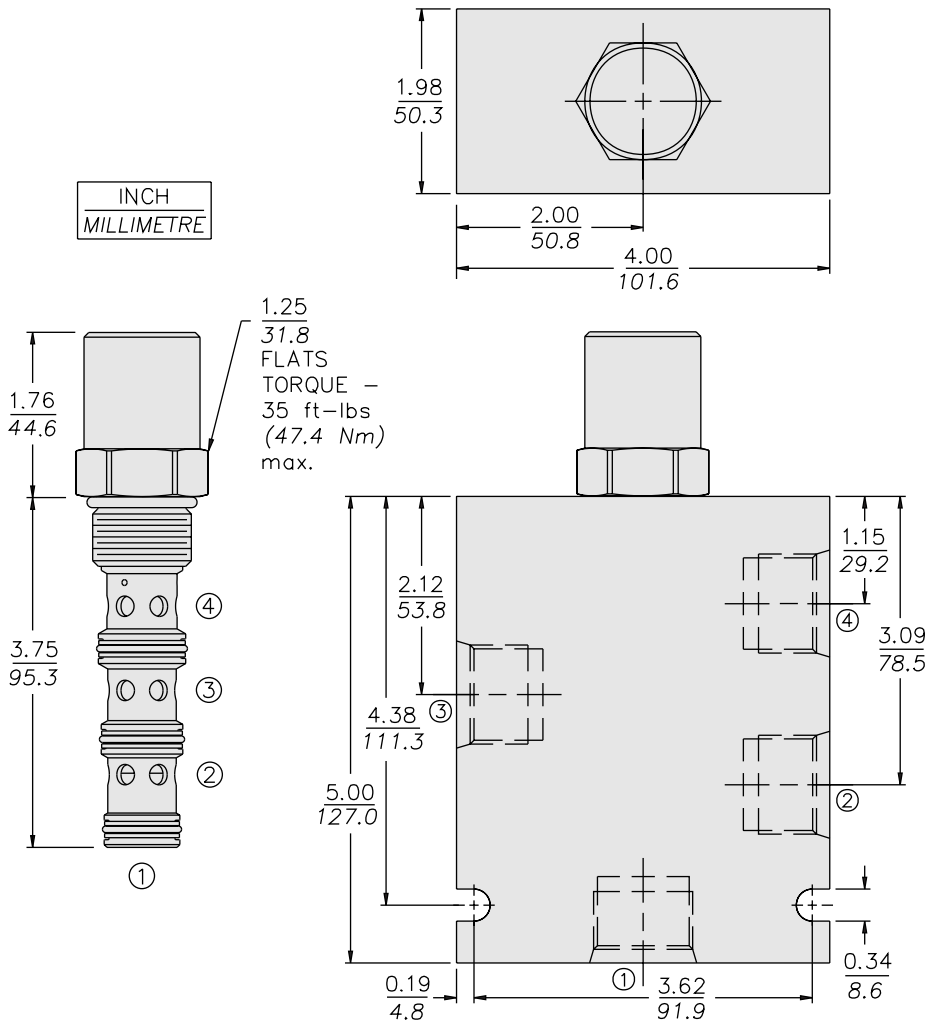
Note: This valve, the EC12-42, replaces the older EC12-41 functionally, although the two valves have different port logic. We will continue to provide the EC12-41 for existing customers, but recommend conversion to the new EC12-42 for new designs. For more information consult factory.

PERFORMANCE (Cartridge Only)

Priority Flow vs. Load
EC12-42-160 at 95 lpm/25 gpm Inlet Flow
32 cSt/150 sus oil at 40°C



DIMENSIONS



MATERIALS

Cartridge: Weight: 0.28 kg. (0.61 lbs.);
Steel with hardened work surfaces.
Zinc-plated exposed surfaces.
Buna N O-rings and polyester
elastomer back-ups standard.

Standard Ported Body: Weight:
1.50 kg. (3.30 lbs.); Anodized high-
strength 6061 T6 aluminum alloy,
rated to 240 bar (3500 psi); see page
8.012.1. Ductile iron and steel bodies
available; dimensions may differ;
consult factory.

TO ORDER

