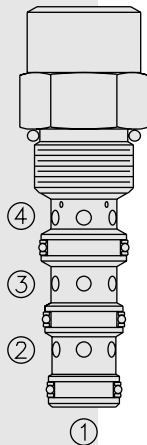


## EC50-42 Pressure Compensator, High Pressure



### DESCRIPTION

A screw-in, cartridge-style, priority-on-demand, pressure-compensator with a static load sense, intended to provide priority flow in the required amount, while allowing excess flow to be used for auxiliary functions.

### OPERATION

With inlet flow at ③, the **EC50-42** will deliver required priority flow at ④, regardless of load pressure. Excess flow exits at ②. Port ① is the load sense port. All ports may be fully pressurized.

### FEATURES

- Hardened parts for long life.
- Quiet, modulated response.
- Industry common cavity.

### RATINGS

**Operating Pressure:** Inlet: 345 bar (5000 psi)

**Input Flow Rate:** 45.4 lpm (12 gpm) maximum

**Maximum Regulated Flow:** 37.9 lpm (10 gpm) with 10.3 bar (150 psi) compensator spring; 30.2 lpm (8.0 gpm) with 5.5 bar (80 psi) compensator spring

**Flow Maintenance:** see performance chart

**Temperature:** -40 to 120°C

**Filtration:** See page 9.010.1

**Fluids:** Mineral-based or synthetics with lubricating properties at viscosities of 7.4 to 420 cSt (50 to 2000 sus)

**Installation:** No restrictions; See page 9.020.1

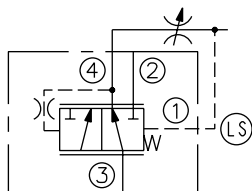
**Cavity:** VC10-4; See page 9.110.1

**Cavity Tool:** CT10-4-XXX; See page 8.600.1

**Seal Kit:** SK10-4P-TMB; See page 8.650.1

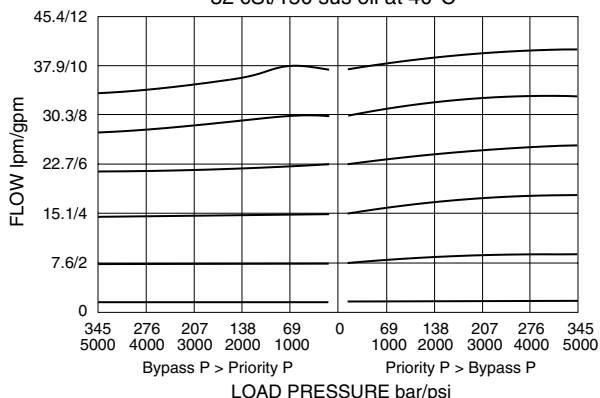
### SYMBOLS

#### USASI/ISO:



### PERFORMANCE (Cartridge Only)

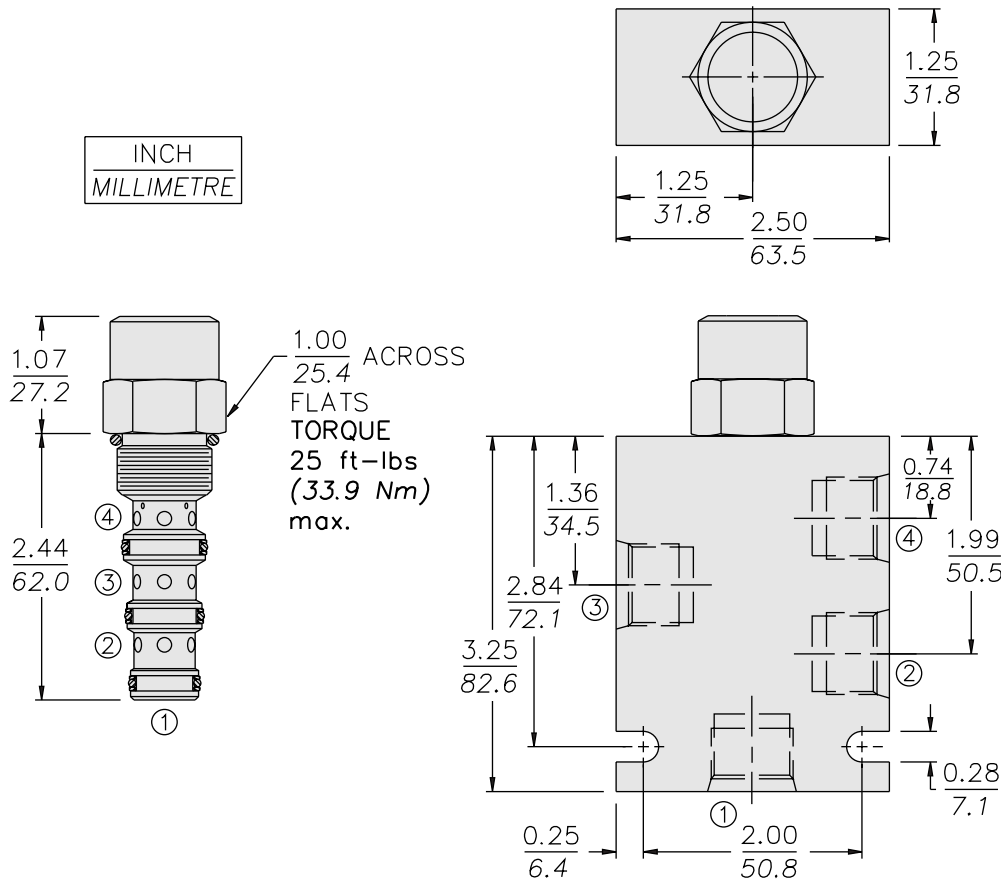
Priority Flow vs. Load  
12 gpm Inlet Flow; 150 psi Compensator Spring  
32 cSt/150 sus oil at 40°C



# with Static Load Sense

# EC50-42

## DIMENSIONS



## MATERIALS

**Cartridge:** Weight: 0.17 kg. (0.37 lbs.);  
Steel with hardened work surfaces.  
Zinc-plated exposed surfaces.  
Buna N O-rings and polyester  
elastomer back-ups standard.

**Ported Body:** Weight: 0.68 kg.  
(1.51 lbs.); Steel, zinc-plated (code  
"S"); or **Ductile Iron (code "D")**  
**standard**, consult factory for weight,  
dimensions may differ; rated to  
345 bar (5000 psi); See page  
8.010.1.

## TO ORDER

