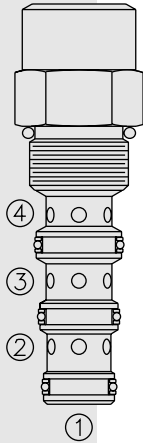


## EC10-42 Pressure Compensator



### DESCRIPTION

A screw-in, cartridge-style, priority-on-demand, pressure-compensator with a static load sense, intended to provide priority flow in the required amount, while allowing excess flow to be used for auxiliary functions.

### OPERATION

With inlet flow at ③, the **EC10-42** will deliver required priority flow at ④, regardless of load pressure. Excess flow exits at ②. Port ① is the load sense port. All ports may be fully pressurized.

### FEATURES

- Hardened parts for long life.
- Quiet, modulated response.
- Industry common cavity.

### RATINGS

**Operating Pressure:** Inlet: 240 bar (3500 psi)

**Maximum Regulated Flow:** 37.9 lpm (10 gpm) with 10.3 bar (150 psi) compensator spring; 30.2 lpm (8.0 gpm) with 5.5 bar (80 psi) compensator spring

**Flow Maintenance:** see performance chart

**Temperature:** -40 to 120°C with Buna N seals

**Filtration:** See page 9.010.1

**Fluids:** Mineral-based or synthetics with lubricating properties at viscosities of 7.4 to 420 cSt (50 to 2000 ssu)

**Installation:** No restrictions; See page 9.020.1

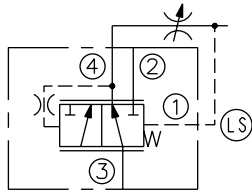
**Cavity:** VC10-4; See page 9.110.1

**Cavity Tool:** CT10-4-XXX; See page 8.600.1

**Seal Kit:** SK10-4X-MMM; See page 8.650.1

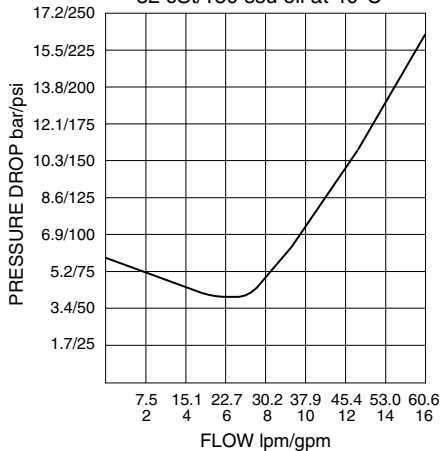
### SYMBOLS

#### USASI/ISO:



### PERFORMANCE (Cartridge Only)

Pressure Drop vs. Inlet Flow  
 ③ to ②; Port ④ closed; Port ② no load;  
 150 psi Compensator Spring  
 32 cSt/150 ssu oil at 40°C

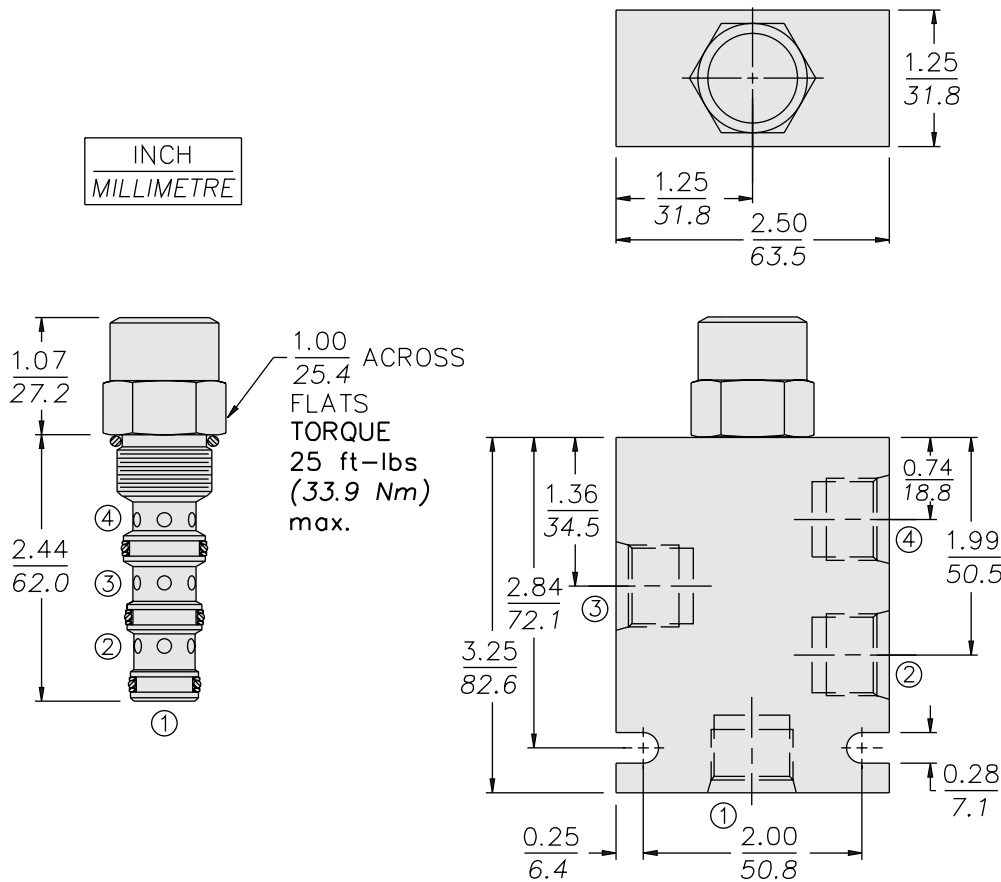


**Note:** This valve, the EC10-42, replaces the older EC10-41 functionally, although the two valves have different port logic. We will continue to provide the EC10-41 for existing customers, but recommend conversion to the new EC10-42 for new designs. For more information consult factory.

# with Static Load Sense

# EC10-42

## DIMENSIONS



## MATERIALS

**Cartridge:** Weight: 0.16 kg. (0.35 lbs.);  
Steel with hardened work surfaces.  
Zinc-plated exposed surfaces.  
Buna N O-rings and polyester elastomer back-ups standard.

**Standard Ported Body:** Weight:  
0.34 kg. (0.75 lbs.); Anodized high-strength 6061 T6 aluminum alloy, rated to 240 bar (3500 psi); see page 8.010.1. Ductile iron and steel bodies available; dimensions may differ; consult factory.

## TO ORDER

<b>EC10-42 -</b>		<b>Compensator Spring</b>	
<b>Porting</b>		<b>80</b>	5.5 bar (80 psid)
Cartridge Only	<b>0</b>	<b>150</b>	10.3 bar (150 psid)
SAE 6	<b>6T</b>		
SAE 8	<b>8T</b>		
1/4 in. BSP*	<b>2B</b>		
3/8 in. BSP*	<b>3B</b>		
		<b>Seals</b>	
		<b>N</b>	Buna N (Std.)
		<b>V</b>	Fluorocarbon

\*BSP Body;  
U.K. Mfr. Only