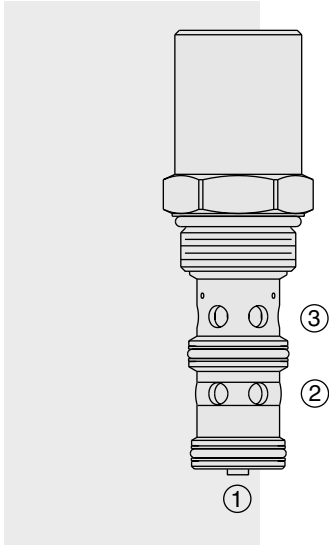


FLOW CONTROLS

EC16-34 Pressure Compensator, Load Holding



DESCRIPTION

A screw-in, cartridge-style, load sense, pressure-compensator hydraulic valve with built-in damping and load-holding features for use in gravity-lowering circuits.

OPERATION

The EC16-34 is designed to be used in combination with a flow control valve for lowering and holding a load. With inlet flow at port ②, port ③ will deliver required flow regardless of load pressure at ②. Port ① of the compensator must be connected to the outlet of a flow control valve that is connected to the tank.

FEATURES

- Hardened spool and cage for long life.
- Hardened seat for low-leakage load-holding capability.
- Quiet, modulated response.
- Industry common cavity.

RATINGS

Operating Pressure: Inlet: 241 bar (3500 psi) with standard Buna N seals.

Maximum Regulated Flow: 170 lpm (45 gpm) See performance chart.

Compensation Value: 13.8 bar (200 psi).

Maximum Leakage at Port 1: 5 drops/minute with 207 bar (3000 psi) at port ②.

Temperature: -40 to 120°C with Buna N seals.

Filtration: See page 9.010.1

Fluids: Mineral-based or synthetics with lubricating properties at viscosities of 7.4 to 420 cSt (50 to 2000 ssu).

Installation: No restrictions; See page 9.020.1

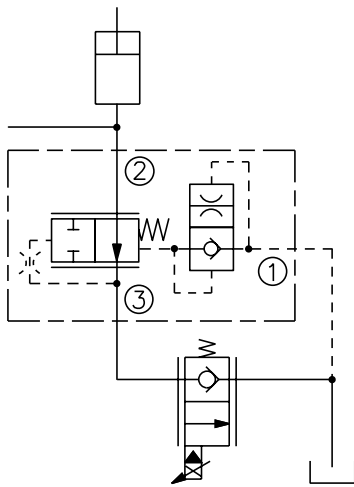
Cavity: VC16-3; See page 9.116.1

Cavity Tool: CT16-3XX; See page 8.600.1

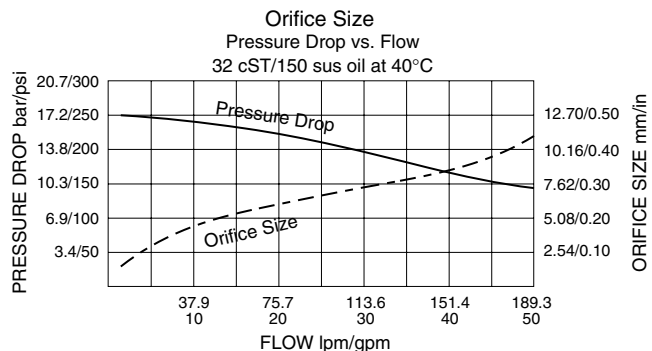
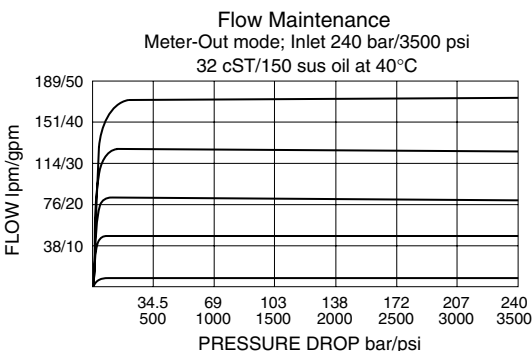
Seal Kit: SK16-3X-MM; See page 8.650.1

SYMBOL

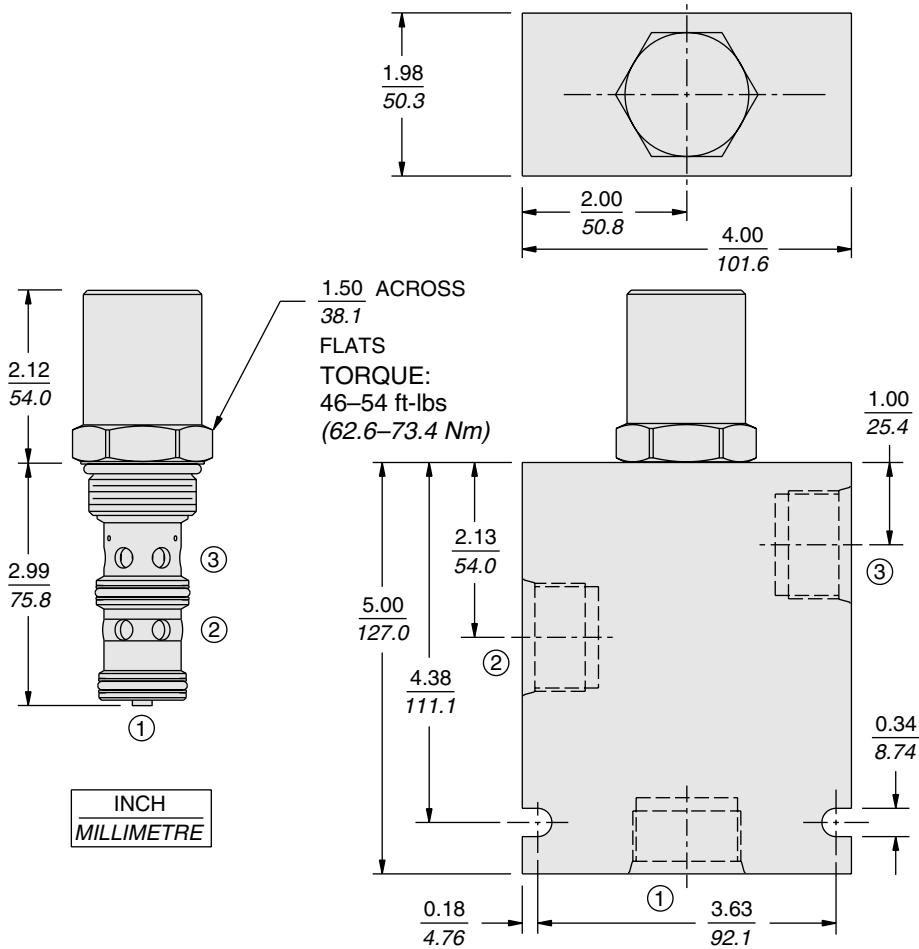
USASI/ISO:



PERFORMANCE (Cartridge Only)



DIMENSIONS



MATERIALS

Cartridge: Weight: 0.52 kg. (1.15 lbs.);
Steel with hardened work surfaces.
Zinc-plated exposed surfaces.
Buna N O-rings and polyester
elastomer back-ups standard.

Standard Ported Body: Weight:
1.50 kg. (3.3 lbs.); Anodized high-
strength 6061 T6 aluminum alloy,
rated to 240 bar (3500 psi); see page
8.016.1. Steel and Ductile iron
bodies available, dimensions may
differ; consult factory.

TO ORDER

