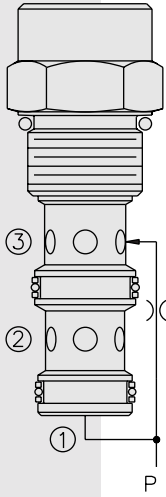


EC12-30 Pressure Compensator



DESCRIPTION

A screw-in, cartridge-style pressure-compensating element, intended for use with a remote fixed or variable orifice to yield a two-port-type, pressure-compensated, flow-regulating hydraulic valve.

OPERATION

The **EC12-30** maintains a constant flow rate from ② regardless of load pressure changes in the circuit downstream of ②.

The cartridge maintains a constant differential pressure from circuit point P to port ① (see USASI Symbol), thereby regulating the hydraulic flow rate between the two points in the circuit.

FEATURES

- Hardened parts for long life.
- Quiet, modulated response.
- Industry common cavity.

RATINGS

Operating Pressure: 240 bar (3500 psi)

Regulated Flow Rate: 58 lpm (15 gpm) max.

Standard Compensator Bias Spring: 6.9 bar (100 psid) (See note on Ordering Table.)

Flow Maintenance: $\pm 10\%$ from 0.38 to 58 lpm (0.1 to 15 gpm) at pressures from 5.5 to 207 bar (80 to 3000 psi)

Temperature: -40 to 120°C

Filtration: See page 9.010.1

Fluids: Mineral-based or synthetics with lubricating properties at viscosities of 7.4 to 420 cSt (50 to 2000 ssu)

Installation: No restrictions; See page 9.020.1

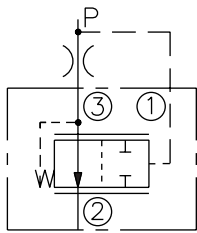
Cavity: VC12-3; See page 9.112.1

Cavity Tool: CT12-3XX; See page 8.600.1

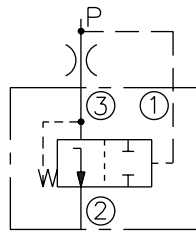
Seal Kit: SK12-3X-TB; See page 8.650.1

SYMBOLS

USASI:



ISO:



PERFORMANCE (Cartridge Only)

Output Flow vs. Orifice Dia.
with 100 psid Spring
32 cSt/150 ssu oil at 40°C

