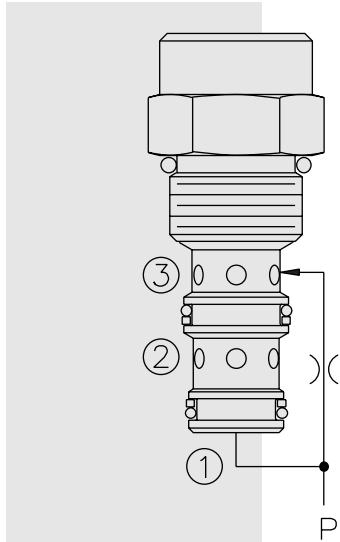


## EC10-30 Pressure Compensator



### DESCRIPTION

A screw-in, cartridge-style pressure-compensating element, intended for use with a remote fixed or variable orifice to yield a two-port-type, pressure-compensated, flow regulating hydraulic valve.

### OPERATION

The **EC10-30** maintains a constant flow rate from ② regardless of load pressure changes in the circuit downstream of ②.

The cartridge maintains a constant differential pressure from circuit point P to port ③ (see USASI Symbol), thereby regulating the hydraulic flow rate between the two points in the circuit.

### FEATURES

- Hardened parts for long life.
- Quiet, modulated response.
- Industry common cavity.

### RATINGS

**Operating Pressure:** 207 bar (3000 psi)

**Regulated Flow Rate:** 30.3 lpm (8 gpm) max.

**Standard Compensator Bias Spring:** 5.5 bar (80 psid)

**Flow Maintenance:**  $\pm 10\%$  from 0.38 to 38 lpm (0.1 to 10 gpm) at pressures from 5.5 to 207 bar (80 to 3000 psi)

**Temperature:** -40 to 120°C

**Filtration:** See page 9.010.1

**Fluids:** Mineral-based or synthetics with lubricating properties at viscosities of 7.4 to 420 cSt (50 to 2000 ssu)

**Installation:** No restrictions; See page 9.020.1

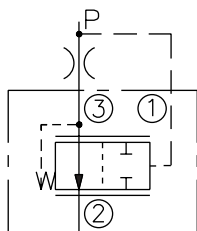
**Cavity:** VC10-3; See page 9.110.1

**Cavity Tool:** CT10-3XX; See page 8.600.1

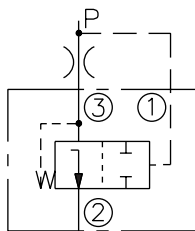
**Seal Kit:** SK10-3X-TB; See page 8.650.1

### SYMBOLS

#### USASI:

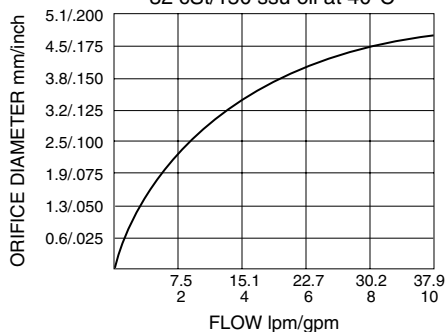


#### ISO:

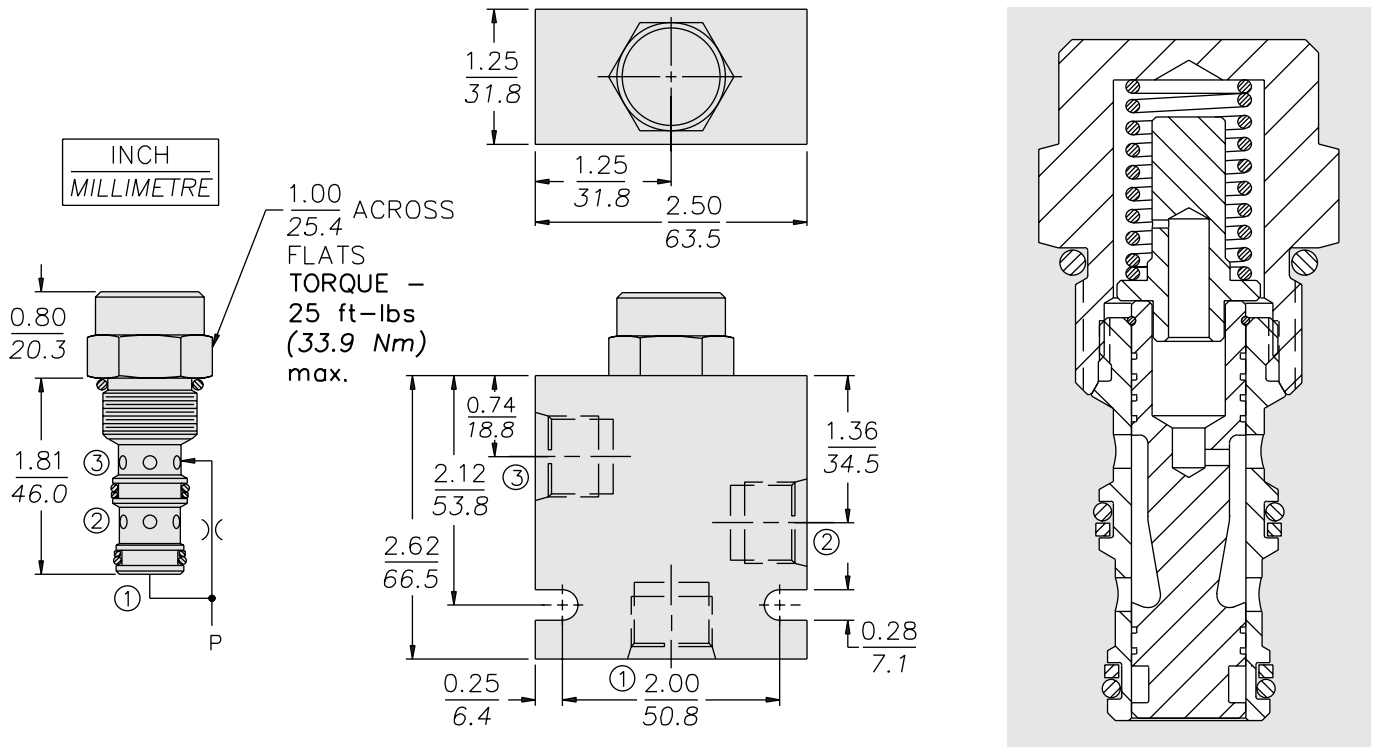


### PERFORMANCE (Cartridge Only)

Output Flow vs. Orifice Dia.  
with 80 psid Spring  
32 cSt/150 ssu oil at 40°C



## DIMENSIONS



## MATERIALS

**Cartridge:** Weight: 0.11 kg. (0.25 lbs.); Steel with hardened work surfaces. Zinc-plated exposed surfaces. Buna N O-rings and polyester elastomer back-ups standard.

**Standard Ported Body:** Weight: 0.36 kg. (0.80 lbs.); Anodized high-strength 6061 T6 aluminum alloy, rated to 240 bar (3500 psi); see page 8.010.1. Ductile iron and steel bodies available; dimensions may differ; consult factory.

## TO ORDER

### EC10-30 -

**Porting**  
 Cartridge Only **0**  
 SAE 6 **6T**  
 SAE 8 **8T**  
 1/4 in. BSP\* **2B**  
 3/8 in. BSP\* **3B**

\*BSP Body;  
 U.K. Mfr. Only

### Compensator Spring

**40** 2.8 bar (40 psid)  
**80** 5.5 bar (80 psid) standard  
**160** 11.0 bar (160 psid)

### Seals

**N** Buna N (Std.)  
**V** Fluorocarbon