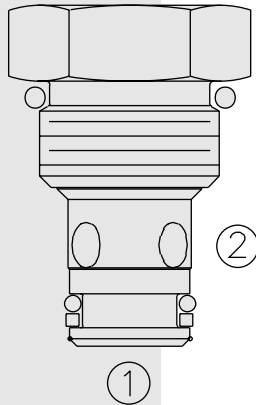


FLOW CONTROLS

FC08-20F Flow Control, Orifice Check



DESCRIPTION

A screw-in, cartridge-style, restrictor check valve.

OPERATION

The FC08-20F acts as a restrictor in the ② to ① direction. As a check valve it provides free flow from ① to ②.

FEATURES

- Hardened spool and cage for long life.
- Industry-common cavity.

RATINGS

Operating Pressure: 240 bar (3500 psi)

Flow: See Performance Chart

Temperature: -40 to 120°C with Buna N seals

Filtration: See page 9.010.1

Fluids: Mineral-based or synthetics with lubricating properties at viscosities of 7.4 to 420 cSt (50 to 2000 ssu)

Installation: No restrictions; See page 9.020.1

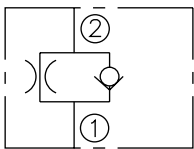
Cavity: VC08-2; See page 9.108.1

Cavity Tool: CT08-2XX; See page 8.600.1

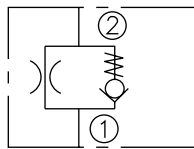
Seal Kit: SK08-2X-T; See page 8.650.1

SYMBOLS

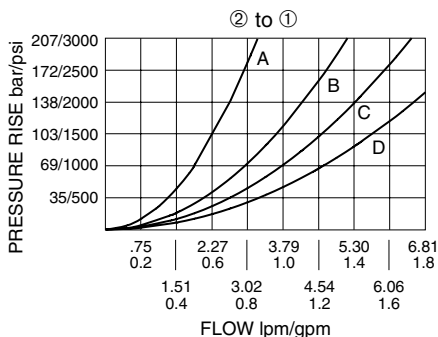
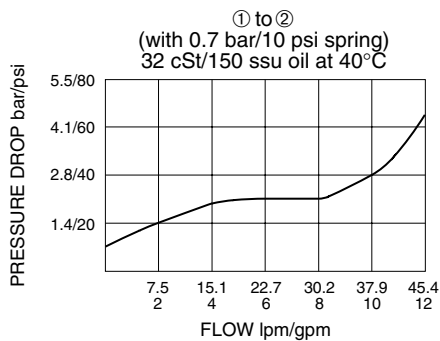
USASI:



ISO:

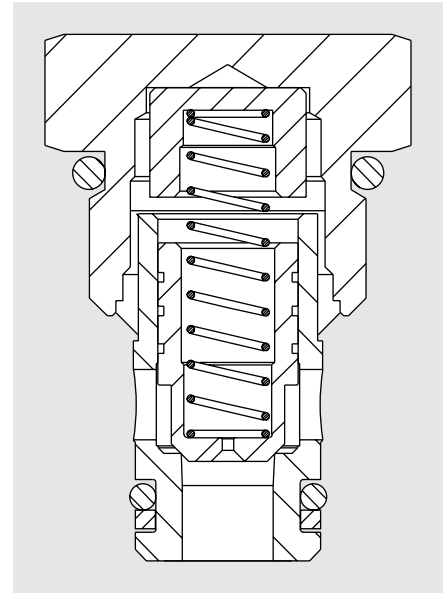
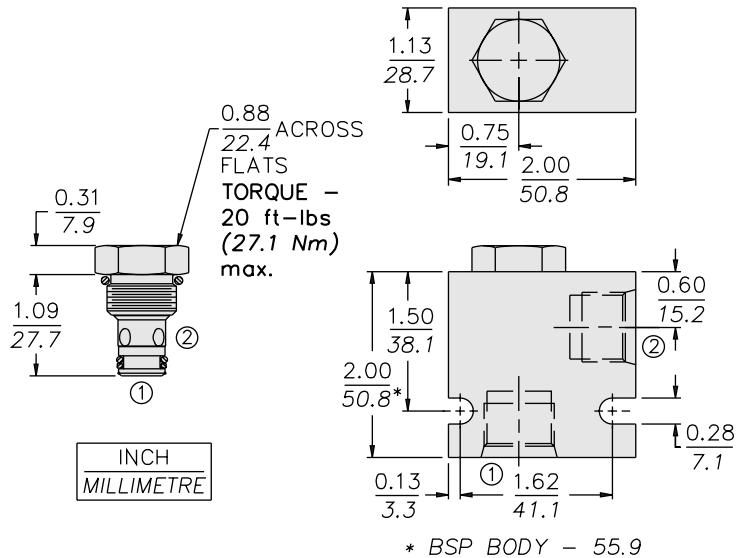


PERFORMANCE (Cartridge Only)



FC08-20F

DIMENSIONS



MATERIALS

Cartridge: Weight: 0.10 kg. (0.23 lbs.); Steel with hardened work surfaces; Zinc-plated exposed surfaces; Buna N O-rings and polyester elastomer back-up standard.

Standard Ported Body: Weight: 0.16 kg. (0.35 lbs.); Anodized high-strength 6061 T6 aluminum alloy, rated to 240 bar (3500 psi); see page 8.008.1. Ductile iron and steel bodies available; dimensions may differ; consult factory.

TO ORDER

FC08-20F -

Porting

Cartridge Only **0**

SAE 4 **4T**

SAE 6 **6T**

SAE 8 **8T**

1/4 in. BSP* **2B**

3/8 in. BSP* **3B**

1/2 in. BSP* **4B**

*BSP Body;
U.K. Mfr. Only

Bias Spring

10 0.7 bar (10 psi) Std.

Optional Bias Springs
considered on OEM request.

Equivalent Orifice Size

A .025 in.

B .033 in.

C .036 in.

D .040 in.

E .053 in.

F .056 in.

G .047 in.

Seals

N Buna N (Std.)

V Fluorocarbon