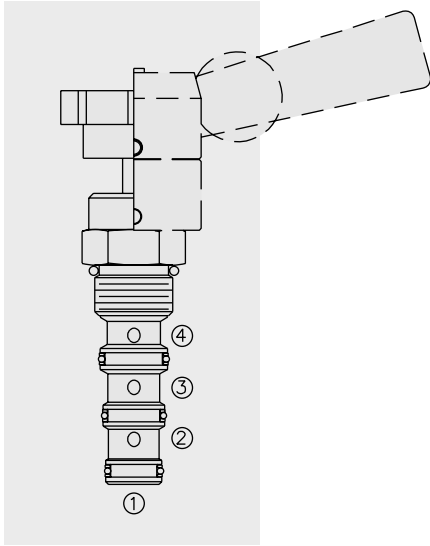


# DIRECTIONAL VALVES

## MR10-47A Manual Rotary, 4-Way, 3-Pos. Tandem Center



### DESCRIPTION

Manually-operated four-way, three-position directional valve, with adaptability to a variety of adjustment operators (ordered separately), in a variety of spool configurations.

### OPERATION

Three positions: centered, 45° counterclockwise, and 45° clockwise. In the center position ports ① and ③ are open while ports ② and ④ are closed. In the 45° counterclockwise from center position, ports ① and ④ are open while ports ② and ③ are open. In the 45° clockwise from center position, ports ① and ② are open while ports ③ and ④ are open. All ports are partially open in transition.

### FEATURES

- Three-position detent, friction lock (with detented neutral), or spring return operators may be ordered separately.
- May be fully pressurized at all ports.
- Optional lock-down bracket.
- Heavy-duty construction.
- Industry common cavity.

### RATINGS

**Operating Pressure:** 240 bar (3500 psi)

**Max. Flow:** See Performance Chart

**Internal Leakage:** 164 cc/minute (10 cu. in./minute) at 240 bar (3500 psi)

**Temperature:** -40 to 120°C with standard Buna N seals

**Fluids:** Mineral-based or synthetics with lubricating properties at viscosities of 7.4 to 420 cSt (50 to 2000 ssu)

**Installation:** No position restrictions; See page 9.020.1

See page 4.990.2 for operator handles/knobs installation;

See page 4.990.1 for lock-down bracket installation.

**Cavity:** VC10-4; See page 9.110.1

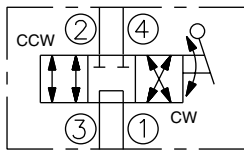
**Cavity Tool:** CT10-4XX; See page 8.600.1

**Seal Kit:** SK10-4X-MMM; See page 8.650.1

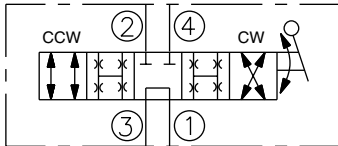
**Lock-Down Bracket Kit:** Part Number 5399000

### SYMBOLS

#### USAS/ISO:

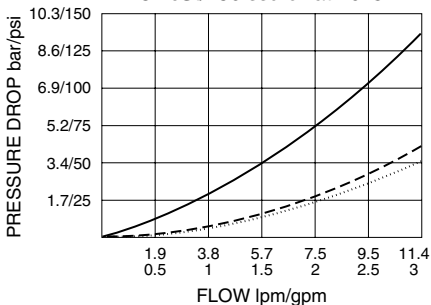


#### TRANSITION:



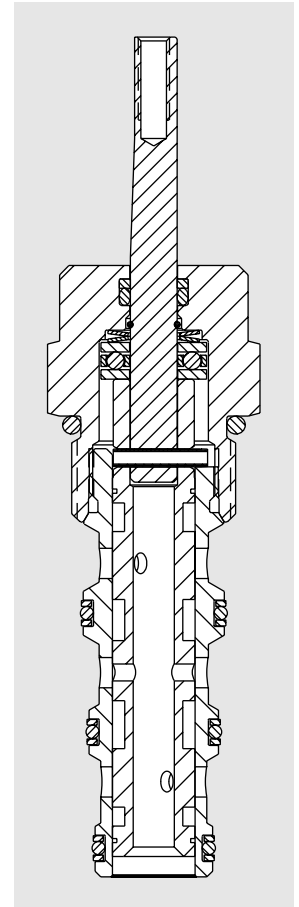
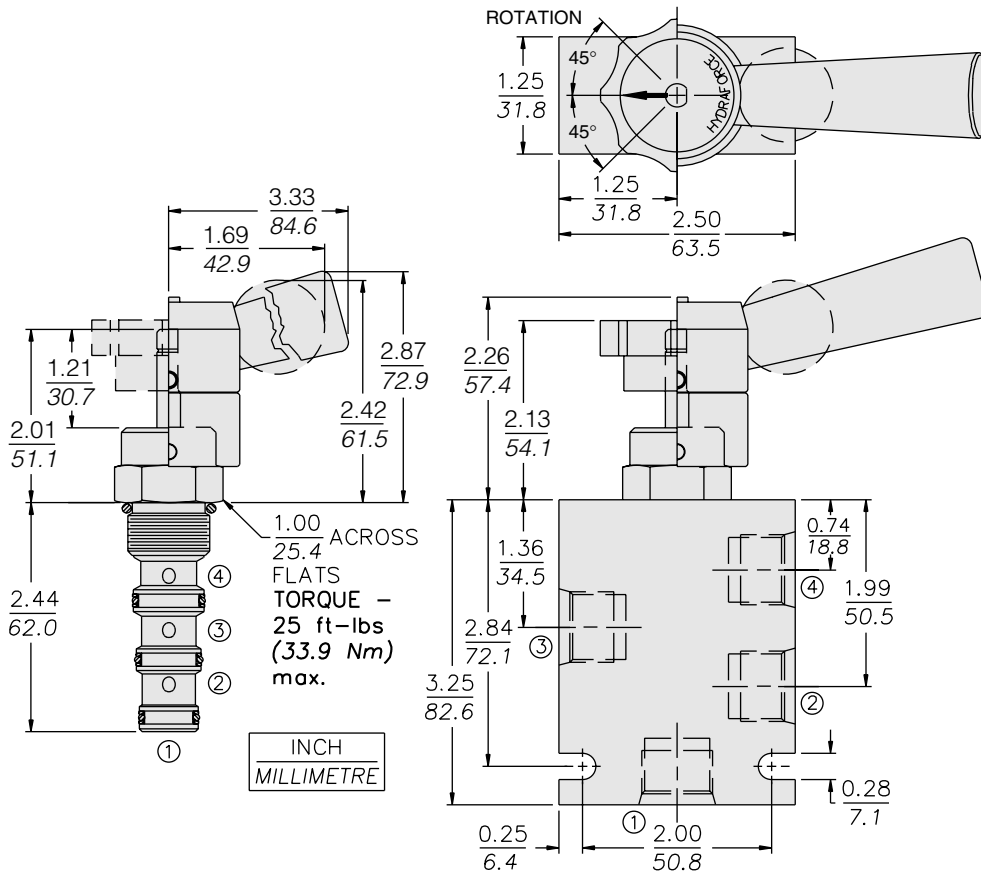
### PERFORMANCE (Cartridge Only)

③ to ② & ③ to ④ — ;  
 ③ to ① - - - ;  
 ② to ① & ④ to ① •••  
 32 cSt/150 ssu oil at 40°C



# MR10-47A

## DIMENSIONS



## MATERIALS

**Cartridge:** Weight: 0.13 kg. (0.29 lbs.); Steel with hardened work surfaces. Zinc-plated exposed surfaces. Buna N O-rings and Fluorocarbon back-ups standard.

**Standard Ported Body:** Weight: 0.34 kg. (0.75 lbs.); Anodized high-strength 6061 T6 aluminum alloy, rated to 240 bar (3500 psi); see page 8.010.1. Ductile iron and steel bodies available; dimensions may differ; consult factory.

**Lever-Type Handle:** (Sold Separately) Weight: 0.18 kg. (0.38 lbs.); Steel with hardened work surfaces. Zinc-plated exposed surfaces. Plastic lever arm.

## TO ORDER

<b>MR10-47A</b>		-	-
<b>Option</b>			<b>Seals</b>
None (Blank)			<b>N</b> Buna N (Std.)
			<b>V</b> Fluorocarbon
<b>Porting</b>			
Cartridge Only	<b>0</b>		
SAE 6	<b>6T</b>		
SAE 8	<b>8T</b>		
SAE 8 with Lock-Down Bracket	<b>8TL</b>		
1/4 in. BSP*	<b>2B</b>		
3/8 in. BSP*	<b>3B</b>		
*BSP Body; U.K. Mfr. Only			

NOTE: To order standard operator kits, refer to pages 4.770.1 and 4.770.2