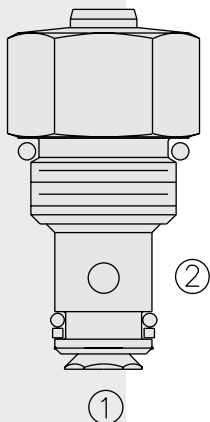


# DIRECTIONAL VALVES

## MV08-22 Manual Release Valve



### DESCRIPTION

A cam-operated, two-way, normally-closed poppet-type directional valve.

### OPERATION

The MV08-22 blocks flow in the ② to ① flow path until cam force is supplied sufficient to overcome the spring bias plus load force.

Note: For applications requiring the ① to ② flow path, consult factory.

### FEATURES

- Hardened seat and poppet for long life.
- Stainless steel cam button.

### RATINGS

**Operating Pressure:** 207 bar (3000 psi)

**Flow:** 15.1 lpm (4 gpm)

**Internal Leakage:** 0.15 cc/minute (3 drops/minute) max. from 20.7 to 207 bar (300 to 3000 psi) on port ②

#### Required Cam Force for Operation Port ② Loaded:

No load: 9.1 kgs. (20 lbs.)

69 bar (1000 psi): 20.9 kgs. (46 lbs.)

138 bar (2000 psi): 32.7 kgs. (72 lbs.)

207 bar (3000 psi): 44.5 kgs. (98 lbs.)

**Temperature:** -40 to 120°C

**Filtration:** See page 9.010.1

**Fluids:** Mineral-based or synthetics with lubricating properties at viscosities of 7.4 to 420 cSt (50 to 2000 ssu)

**Installation:** Position unlimited. 11.9 mm (15/32 in.) diameter drill, 32.5 mm (1.28 in.) from spotface required minimum.

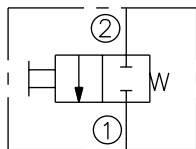
**Cavity:** VC08-2, Cavity Variation "A"; See page 9.108.1

**Cavity Tool:** CT08-2; See page 8.600.1

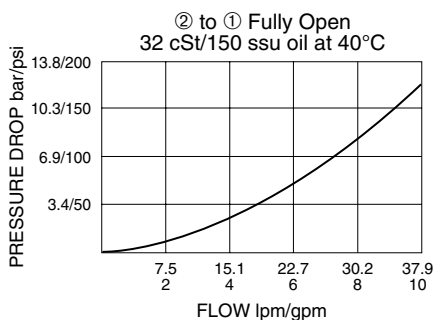
**Seal Kit:** SK08-2X-T; See page 8.650.1

### SYMBOLS

#### USASI/ISO:

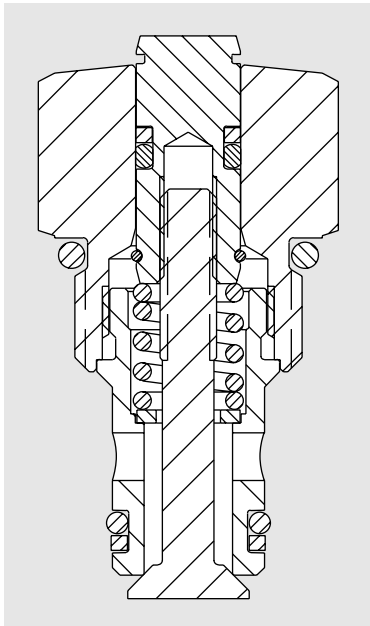
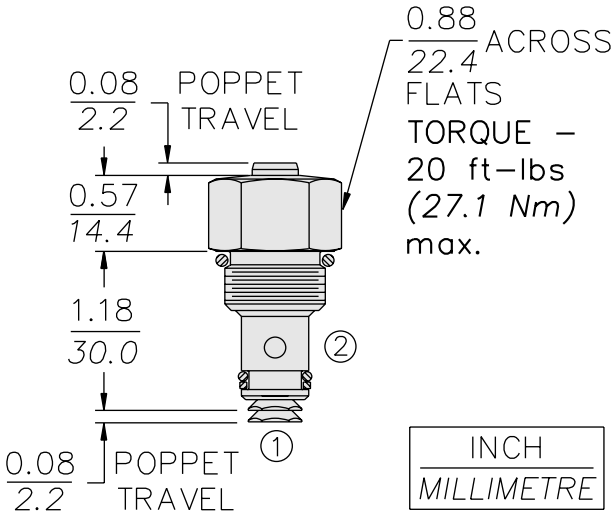


### PERFORMANCE (Cartridge Only)



**MV08-22**

**DIMENSIONS**



ORIFICE DISCS SHOULD NOT BE USED WITH THIS PRODUCT.

**MATERIALS**

**Cartridge:** Weight: 0.05 kg. (0.12 lbs.); Stainless steel pin; Steel with hardened work surfaces; Zinc-plated exposed surfaces; Buna N O-rings and back-up standard.

**Standard Ported Body:** None; consult factory.

**TO ORDER**

**MV08-22-0-**

Seals  
**N** Buna N (Std.)  
**V** Fluorocarbon