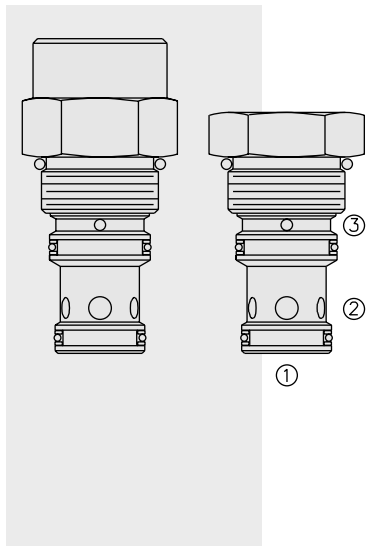


# DIRECTIONAL VALVES

## EV16-S34 Vented Spool-Type Logic Element



### DESCRIPTION

A spool-type, screw-in, cartridge-style, hydraulic directional element, with multi-function potential when used with other directional, pressure, or flow control devices.

### OPERATION

The EV16-S34 is a spring-biased blocking valve which will shift to allow full flow from ① to ② only when ③ is vented to create a pressure drop across the internal orifice which exceeds the pressure value of the selected bias spring force.

EV16-S34 is a vent-to-open directional valve.

### FEATURES

- Multiple function/application potential.
- Smooth shift transition.
- Low pressure drop.
- Industry common cavity.

### RATINGS

**Operating Pressure:** 240 bar (3500 psi)

**Proof Pressure:** 420 bar (6090 psi)

**Flow:** See Performance Chart

**Internal Leakage:** 164 cc/minute (10 cu. in./minute) max. at 207 bar (3000 psi)

**Temperature:** -40 to 120°C with standard Buna seals

**Filtration:** See page 9.010.1

**Fluids:** Mineral-based or synthetics with lubricating properties at viscosities of 7.4 to 420 cSt (50 to 2000 ssu)

**Installation:** No restrictions; See page 9.020.1

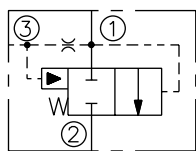
**Cavity:** VC16-S3; See page 9.116.1

**Cavity Tool:** CT16-S3XX; See page 8.600.1

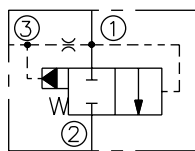
**Seal Kit:** SK16-3X-MM; See page 8.650.1

### SYMBOLS

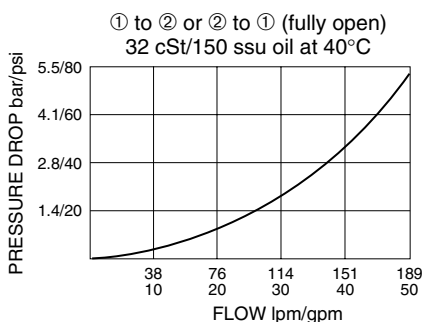
#### USASI:



#### ISO:

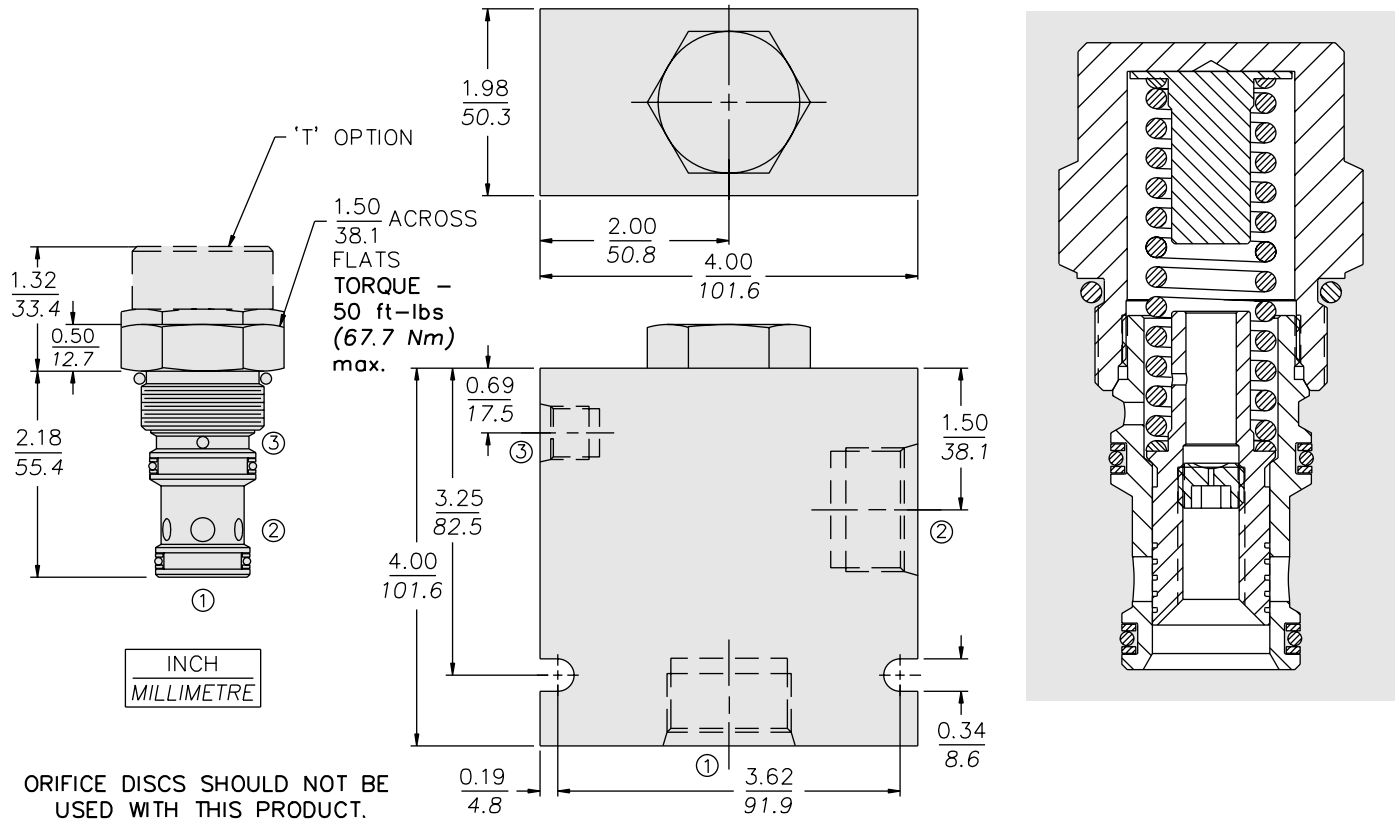


### PERFORMANCE (Cartridge Only)



**EV16-S34**

**DIMENSIONS**



**MATERIALS**

**Cartridge:** Weight: 0.27 kg. (0.60 lbs.); Steel with hardened work surfaces; Zinc-plated exposed surfaces; Buna N O-rings and polyester elastomer back-ups standard.

**Standard Ported Body:** Weight: 1.50 kg. (3.3 lbs.). Anodized high-strength 6061 T6 aluminum alloy, rated to 240 bar (3500 psi); see page 8.016.1. Ductile iron and steel bodies available; dimensions may differ; consult factory.

**TO ORDER**

