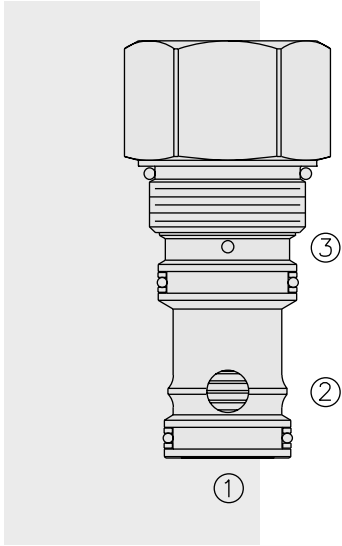


DIRECTIONAL VALVES

EP20-S35 Piloted Spool-Type Logic Element



DESCRIPTION

A spool-type, screw-in, cartridge-style, hydraulic directional element, with multi-function potential when used with other directional, pressure, or flow control devices.

OPERATION

The EP20-S35 is a spring-biased blocking valve which will shift to allow full flow from ① to ② only when pressure at ① exceeds the cumulative pressure of ③, plus the bias spring pressure value.

EP20-S35 is a pilot-to-close directional valve.

With no pressure at ③, flow will be allowed from ① to ② once the bias spring force is overcome with pressure at ①.

FEATURES

- Multiple function/application potential.
- Low pressure drop.
- Industry common cavity.

RATINGS

Maximum Operating Pressure: Cartridge Only: Ports ① & ②: 345 bar (5000 psi); Port ③: 320 bar (4600 psi); Polyurethane seals are recommended for 5000 psi operation. Aluminum bodies for this product are rated for 3500 psi.

Flow: See Performance Chart

Internal Leakage: 164 cc/minute (10 cu. in./minute) max. at 345 bar (5000 psi)

Bias Spring Pressure Options: 5.5 bar (80 psi); 11.0 bar (160 psi)

Temperature: -40 to 120°C with standard Buna seals

Filtration: See page 9.010.1

Fluids: Mineral-based or synthetics with lubricating properties at viscosities of 7.4 to 420 cSt (50 to 2000 ssu)

Installation: No restrictions; See page 9.020.1

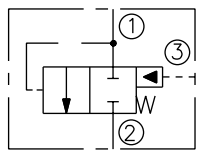
Cavity: VC20-S3; See page 9.120.1

Cavity Tool: CT20-S3XX; See page 8.600.1

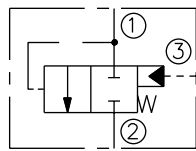
Seal Kit: SK20-3X-MM; See page 8.650.1

SYMBOLS

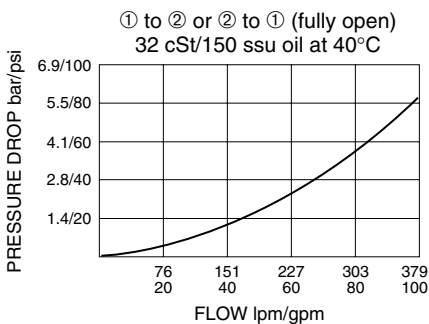
USASI:



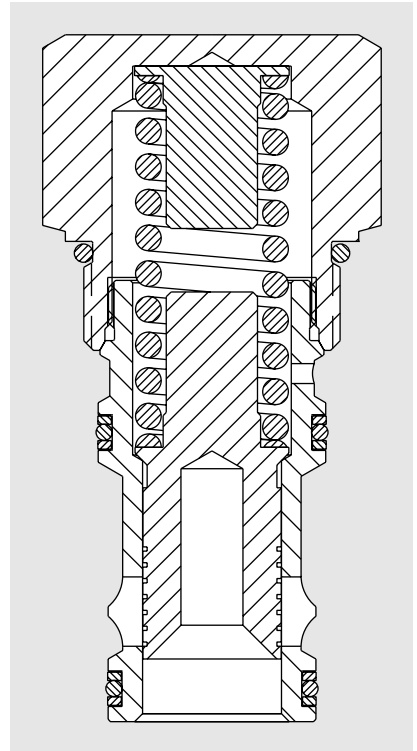
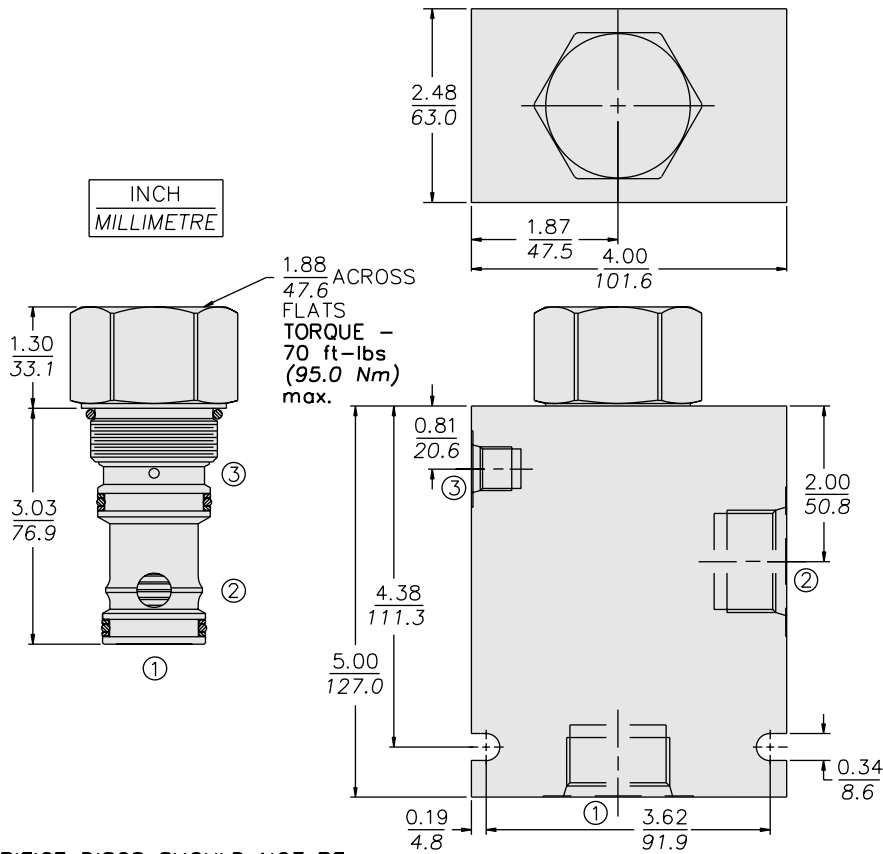
ISO:



PERFORMANCE (Cartridge Only)



DIMENSIONS



ORIFICE DISCS SHOULD NOT BE USED WITH THIS PRODUCT.

MATERIALS

Cartridge: Weight: 0.82 kg. (1.8 lbs.); Steel with hardened work surfaces. Zinc-plated exposed surfaces. Buna N O-rings and polyester elastomer back-ups standard.

Standard Ported Body: Weight: 1.65 kg. (3.65 lbs.). Anodized high-strength 6061 T6 aluminum alloy, rated to 240 bar (3500 psi); see page 8.020.1. Ductile iron and steel bodies available; dimensions may differ; consult factory.

TO ORDER

