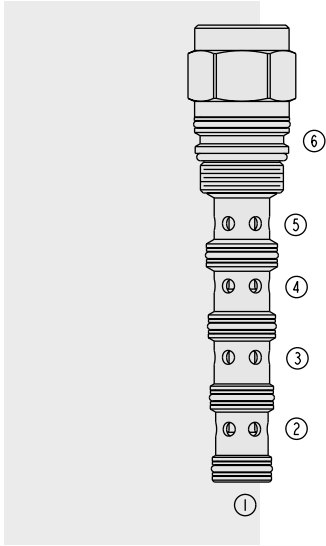


DIRECTIONAL VALVES

PD16-S60N Piloted 4-Way Spool



DESCRIPTION

A screw-in, cartridge-style, pilot-operated, spool-type, hydraulic directional valve.

OPERATION

When in neutral the PD16-S60N allows flow between ports ② and ③, and between ports ④ and ⑤. On remote pilot signal at ①, the valve's spool shifts to allow flow between ③ and ④ and between ② and ⑤. The spring chamber is vented to the tank through port ⑥. The vented spring chamber allows the valve to be fully pressurized at ports ①, ②, ③ and ④ without affecting required pilot pressure. Pressure at port ⑥ will affect required pilot pressure.

FEATURES

- Hardened spool and cage for long life.
- 60, 80, 110 and 170 psi bias springs available.

RATINGS

Operating Pressure: 240 bar (3500 psi)

Flow: 0–151 lpm (0–40 gpm); See Performance Chart

Maximum Internal Leakage: at 207 bar (3000 psi): 164 ml/minute (10 cu. in./minute)

Pilot Pressure Required: 4.1 bar (60 psi) minimum

Oil Volume Required to Full Shift: 1.5 cc (0.09 cu. in.)

Temperature: -40 to 120°C

Filtration: See page 9.010.1

Fluids: Mineral-based or synthetics with lubricating properties at viscosities of 7.4 to 420 cSt (50 to 2000 ssu)

Installation: No restrictions; See page 9.020.1

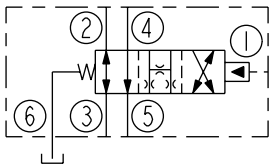
Cavity: VC16-S6; See page 9.116.1

Cavity Tool: CT16-S6XX; See page 8.600.1

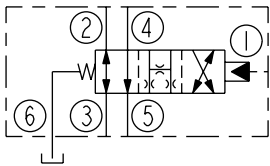
Seal Kit: SK16-S6X-BMMMM; See page 8.650.1

SYMBOLS

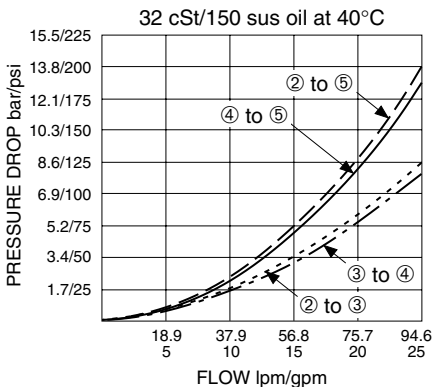
USASI:



ISO:

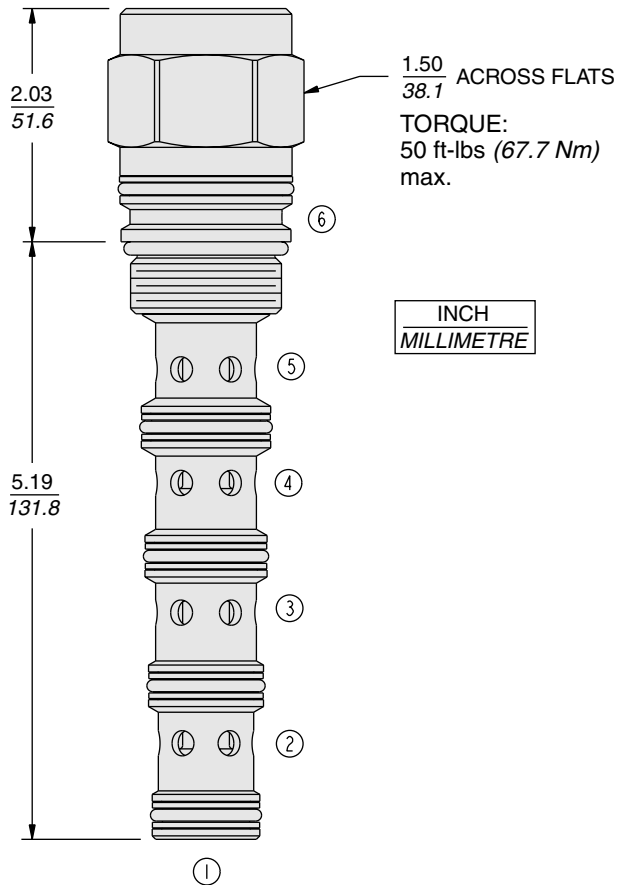


PERFORMANCE (Cartridge Only)



PD16-S60N

DIMENSIONS



MATERIALS

Cartridge: Weight: 0.25 kg. (0.55 lbs.);
Steel with hardened work surfaces.
Zinc-plated exposed surfaces. Buna
N O-rings and polyester elastomer
back-ups standard.

Ported Body: Consult factory.

TO ORDER

PD16-S60N -



Bias Spring†

- 60** 4.1 bar (60 psi)
- 80** 5.5 bar (80 psi)
- 110** 7.6 bar (110 psi)
- 170** 11.7 bar (170 psi)

Optional bias springs considered on OEM request.

*Note: 110 psi bias spring is the minimum required for use with sealed spool.

Seals

- N** Buna N (Std.)
- V** Fluorocarbon
- NS** Buna N w/Sealed Spool ① to ② only
- VS** Fluorocarbon w/Sealed Spool ① to ② only