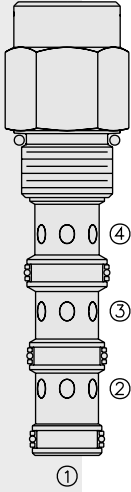


DIRECTIONAL VALVES

PD12-44 Piloted 2-Way Spool



DESCRIPTION

A screw-in, cartridge-style, pilot-operated, spool-type, hydraulic directional valve for two-way circuits requiring remote pilot actuation.

OPERATION

In neutral (unpiloted), the **PD12-44** blocks flow from ③ to ② bidirectionally. The spring chamber is directed to port ④, which is internally O-ring sealed from the cartridge flow paths.

On remote pilot signal at ①, the valve shifts to open from ② to ③, bidirectionally.

Any pressure on port ④ is added to the spring value.

FEATURES

- Hardened spool and cage for long life.
- Cost effective cavity.

RATINGS

Operating Pressure: 240 bar (3500 psi)

Flow: See Performance Chart

Internal Leakage: 115 cc/minute (7 cu. in./minute) max. at 207 bar (3000 psi)

Pilot Pressure Required Using 7.6 bar (110 psi) Spring:

To Spool Crossover: 7.6 bar (110 psi)

To Full Spool Shift: 9.1 bar (132 psi)

Oil Volume Required to Full Shift: 1.32 cc (0.08 cu. in.)

Temperature: -40 to 120°C with standard Buna seals

Filtration: See page 9.010.1

Fluids: Mineral-based or synthetics with lubricating properties at viscosities of 7.4 to 420 cSt (50 to 2000 ssu)

Installation: No restrictions; See page 9.020.1

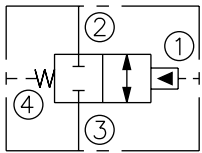
Cavity: VC12-4; See page 9.112.2

Cavity Tool: CT12-4XX; See page 8.600.1

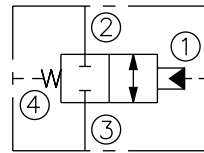
Seal Kit: SK12-4X-MMM; See page 8.650.1

SYMBOLS

USASI:



ISO:



PERFORMANCE (Cartridge Only)

