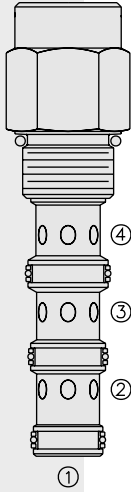


DIRECTIONAL VALVES

PD12-42 Piloted 3-Way Spool, Internal Vent



DESCRIPTION

A screw-in, cartridge-style, pilot-operated, spool-type, hydraulic directional valve for three-way circuits requiring remote pilot actuation.

OPERATION

In neutral (unpiloted), the **PD12-42** allows flow from ③ to ② bidirectionally. ④ is blocked.

On remote pilot signal at ①, the valve shifts to open from ③ to ④, while blocking flow at ②.

Since ④ is common to the spring chamber, pressure on ④ will directly (1:1) affect the pilot pressure required, and must always be added to the bias spring value.

Note: Consult factory for applications where bi-directional flow is required when the valve is in the normal or spring-offset position.

FEATURES

- Hardened spool and cage for long life.
- Cost effective cavity.

RATINGS

Operating Pressure: 240 bar (3500 psi)

Proof Pressure: 420 bar (6090 psi)

Flow: See Performance Chart

Internal Leakage: 115 cc/minute (7 cu. in./minute) max. at 207 bar (3000 psi)

Pilot Pressure Required Using 7.6 bar (110 psi) Spring:

To Spool Crossover: 7.6 bar (110 psi)

To Full Spool Shift: 9.1 bar (132 psi)

Oil Volume Required to Full Shift: 1.32 cc (0.08 cu. in.)

Temperature: -40 to 120°C with standard Buna seals

Filtration: See page 9.010.1

Fluids: Mineral-based or synthetics with lubricating properties at viscosities of 7.4 to 420 cSt (50 to 2000 ssu)

Installation: No restrictions; See page 9.020.1

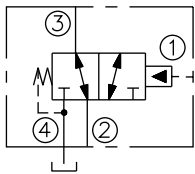
Cavity: VC12-4; See page 9.112.2

Cavity Tool: CT12-4XX; See page 8.600.1

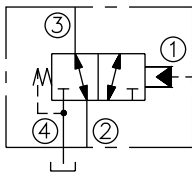
Seal Kit: SK12-4X-MMM; See page 8.650.1

SYMBOLS

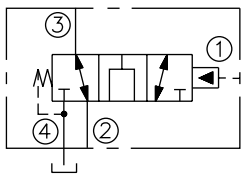
USASI:



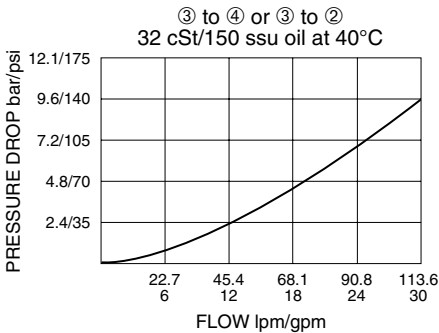
ISO:



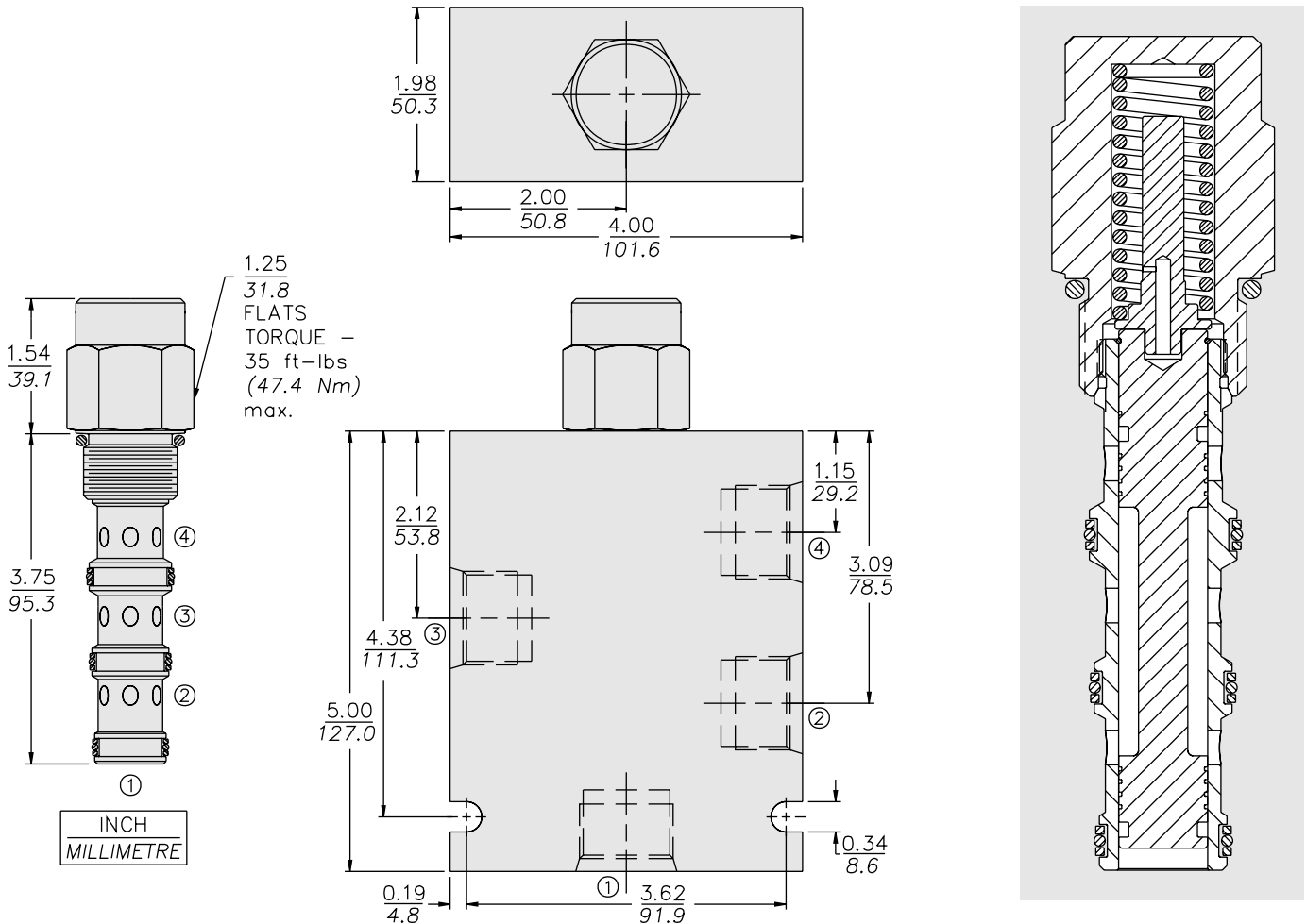
OPEN TRANSITION:



PERFORMANCE (Cartridge Only)



DIMENSIONS



MATERIALS

Cartridge: Weight: 0.28 kg. (0.61 lbs.); Steel with hardened work surfaces. Zinc-plated exposed surfaces. Buna N O-rings and polyester elastomer back-ups standard.

Standard Ported Body: Weight: 1.5 kg. (3.3 lbs.); Anodized high-strength 6061 T6 aluminum alloy, rated to 240 bar (3500 psi); See page 8.012.1. Ductile iron and steel bodies available; dimensions may differ; consult factory.

TO ORDER

