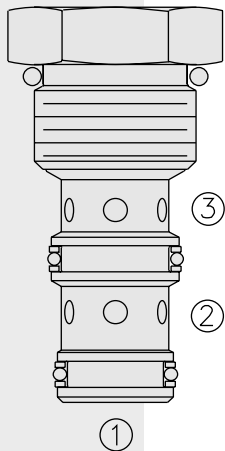


# DIRECTIONAL VALVES

## LS10-30 Load Shuttle, Ball-Type



### DESCRIPTION

A load-shuttling, screw-in, cartridge-style hydraulic check valve, for use in blocking circuits where a priority of flow/direction is given to a higher pressure circuit over a lower one.

### OPERATION

The LS10-30 will allow flow from the higher pressure ① or ③ port to the ② port.

The valve is commonly used to direct oil from the pressure side of a bidirectional hydraulic motor to a pressure-released hydraulic brake.

### FEATURES

- Rapid response to load direction changes.
- Industry common cavity.

### RATINGS

**Operating Pressure:** 240 bar (3500 psi)

**Proof Pressure:** 390 bar (5700 psi)

**Flow:** See Performance Chart

**Internal Leakage:** 0.25 cc/minute (5 drops/minute) max. at 207 bar(3000 psi)

**Temperature:** -40 to 120°C with standard Buna seals

**Filtration:** See page 9.010.1

**Fluids:** Mineral-based or synthetics with lubricating properties at viscosities of 7.4 to 420 cSt (50 to 2000 ssu)

**Installation:** No restrictions; See page 9.020.1

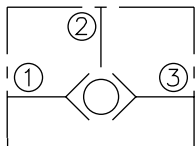
**Cavity:** VC10-3; See page 9.110.1

**Cavity Tool:** CT10-3XX; See page 8.600.1

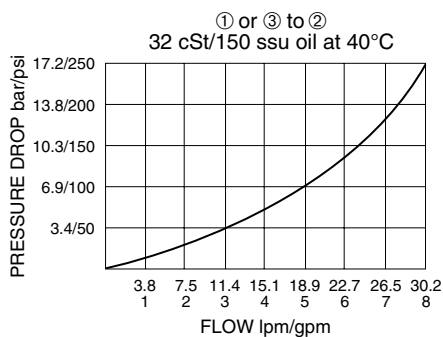
**Seal Kit:** SK10-3X-MM; See page 8.650.1

### SYMBOLS

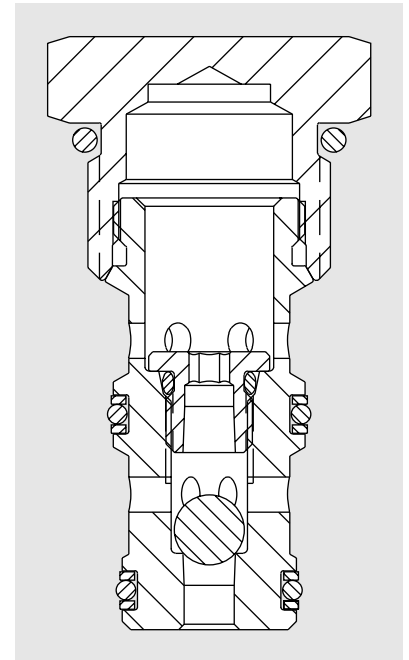
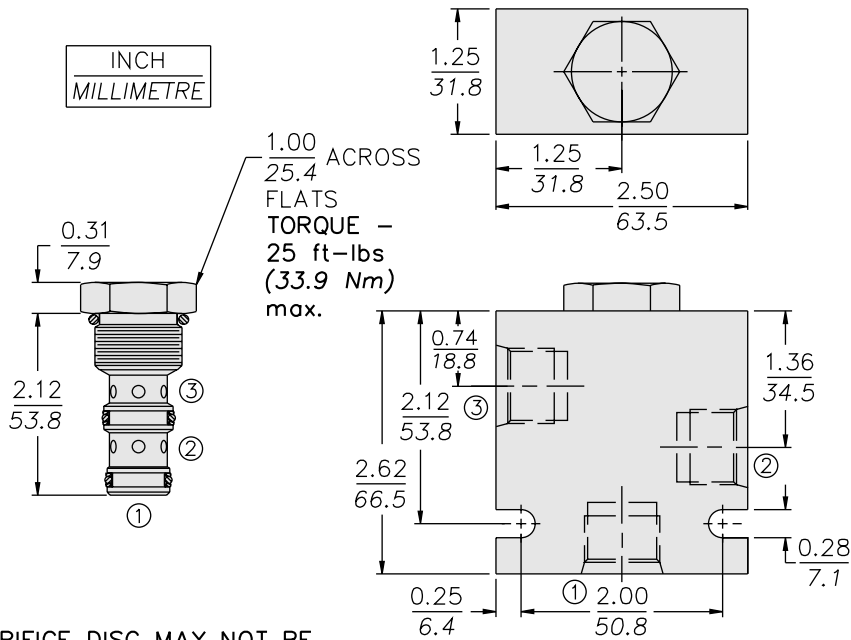
#### USASI/ISO:



### PERFORMANCE (Cartridge Only)



**DIMENSIONS**



**MATERIALS**

**Cartridge:** Weight: 0.08 kg. (0.18 lbs.).  
Steel; Zinc-plated exposed surfaces;  
Buna N O-rings and polyester  
elastomer back-ups standard.

**Standard Ported Body:** Weight:  
0.36 kg. (0.80 lbs.); Anodized high-  
strength 6061 T6 aluminum alloy,  
rated to 240 bar (3500 psi). See  
page 8.010.1. Ductile iron and steel  
bodies available; dimensions may  
differ; consult factory.

**TO ORDER**

<b>LS10-30-</b>		<b>-</b>	
	<b>Porting</b>		<b>Seals</b>
Cartridge Only	<b>0</b>	N	Buna N (Std.)
SAE 6	<b>6T</b>	V	Fluorocarbon
SAE 8	<b>8T</b>		
1/4 in. BSP*	<b>2B</b>		
3/8 in. BSP*	<b>3B</b>		
	*BSP Body; U.K. Mfr. Only		