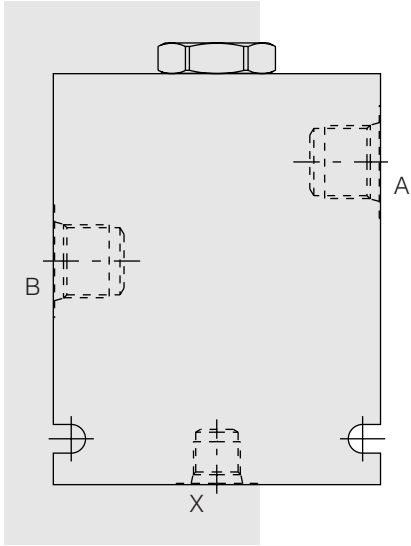


DIRECTIONAL VALVES

PCV12 Check, Pilot-to-Open



DESCRIPTION

An in-line-housed, pilot-operated, hydraulic check valve for use in blocking or load-holding circuits.

OPERATION

The PCV12 allows flow from B to A, while normally blocking flow from A to B. Flow will be allowed from A to B when pressure is applied at X.

The check valve has a 4:1 pilot ratio, meaning that at least one-fourth of the load pressure held at A is required at X to open the valve.

The check is spring-biased at 2 bar (30 psi) to assure holding in static or no-load conditions.

FEATURES

- Hardened seat for long life and low leakage.
- Optional sealed pilot piston.
- Check section is serviceable as a cartridge.

RATINGS

Maximum Operating Pressure: 240 bar (3500 psi)

Flow: See Performance Chart

Internal Leakage:

A to B: 0.25 cc/minute (5 drops/minute) max. at 240 bar (3500 psi);

B to X (without sealed piston): 245 cc/minute (15 cu. in./minute) max. at 240 bar (3500 psi)

Check Bias Spring: 2 bar (30 psi); With Sealed Piston: 4.1 bar (60 psi)

Temperature: -40 to 120°C with standard Buna seals

Filtration: See page 9.010.1

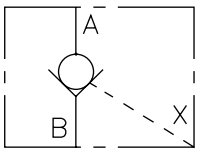
Fluids: Mineral-based or synthetics with lubricating properties at viscosities of 7.4 to 420 cSt (50 to 2000 ssu)

Installation: No restrictions; See page 9.020.1

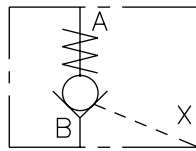
Seal Kit: SK12-2X-T; See page 8.650.1

SYMBOLS

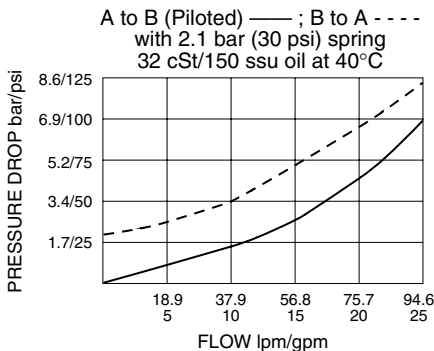
USASI:



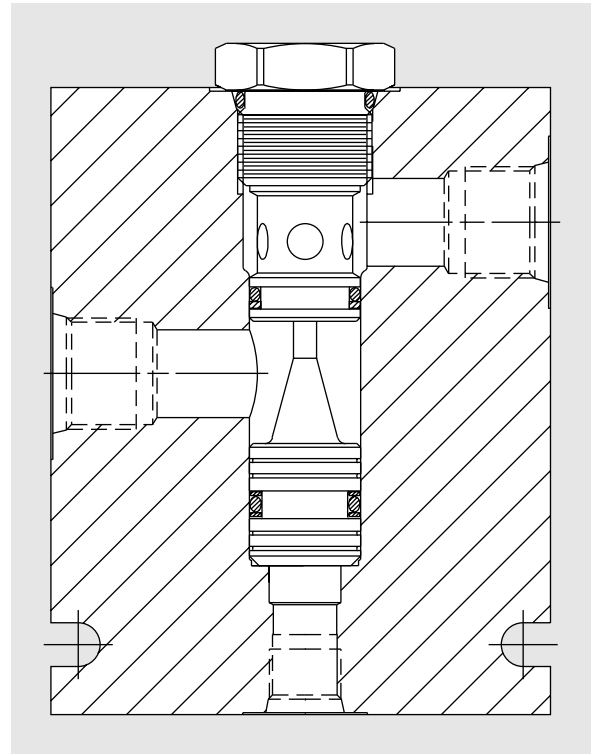
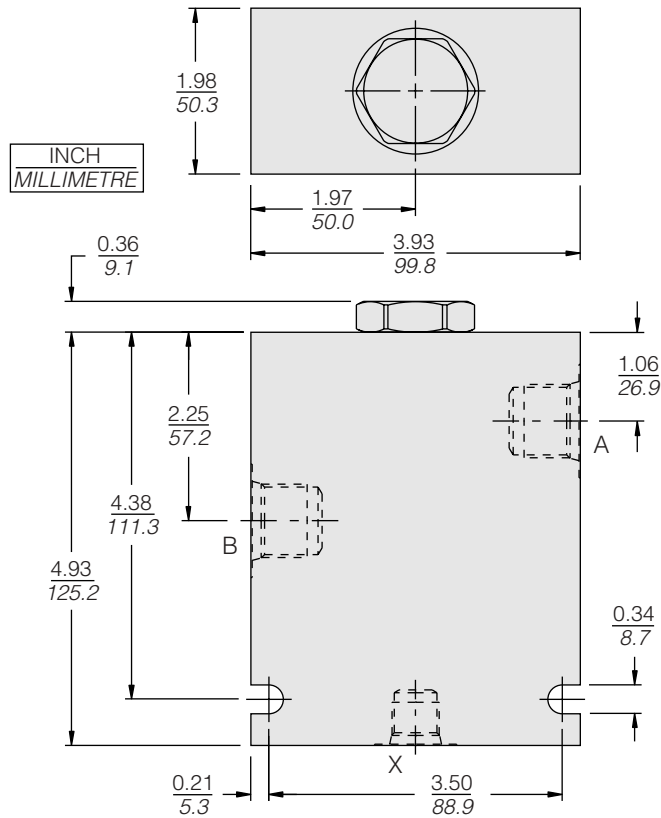
ISO:



PERFORMANCE (Cartridge Only)



DIMENSIONS

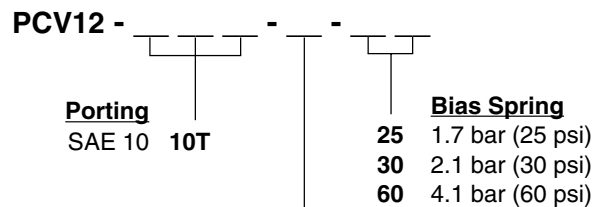


MATERIALS

Cartridge (CV12-20): Weight: 0.18 kg. (0.40 lbs.); Steel with hardened work surfaces. Zinc-plated exposed surfaces. Buna N O-rings and TFE back-ups standard.

Standard Ported Body: Anodized high-strength 6061 T6 aluminum alloy, rated to 240 bar (3500 psi). Ductile iron and steel bodies available; dimensions may differ; consult factory.

TO ORDER



Seals

N Buna N (Std.)

NS Buna N with Sealed Pilot Piston (60 psi spring minimum required)

V Fluorocarbon

VS Fluorocarbon with Sealed Pilot Piston (60 psi spring minimum required)