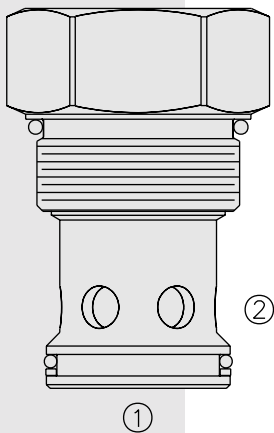


DIRECTIONAL VALVES

CV42-M20 Check Valve



DESCRIPTION

A screw-in, cartridge-style, hydraulic check valve for use as a blocking or load-holding device.

OPERATION

The CV42-M20 allows flow from ① to ②, while blocking oil flow in the opposite direction.

The cartridge has a fully guided poppet which is spring-biased to closed until sufficient pressure is applied at ① to open to ②.

FEATURES

- Hardened seat for long life and low leakage.
- Optional bias springs for back-pressure application flexibility.
- Conforms to ISO 7789 cavity.

RATINGS

Operating Pressure: 240 bar (3500 psi)

Proof Pressure: 350 bar (5075 psi)

Flow: See Performance Chart

Internal Leakage: 0.25 cc/minute (5 drops/minute) max. at 240 bar (3500 psi)

Crack Pressure Defined: Gauge pressure evident at ① at 0.95 lpm (0.25 gpm) attained at ②

Standard Bias Springs at Crack: 0.35 bar (5 psi); 1.7 bar (25 psi); 4.1 bar (60 psi)

Temperature: -40 to 120°C

Filtration: See page 9.010.1

Fluids: Mineral-based or synthetics with lubricating properties at viscosities of 7.4 to 420 cSt (50 to 2000 ssu)

Installation: No restrictions; See page 9.020.1

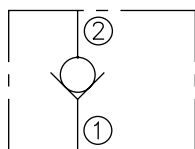
Cavity: VC42-M2 (ISO M42-2.0); See page 9.142.1

Cavity Tool: CT42-M2XX; See page 8.600.1

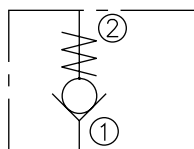
Seal Kit: SK42-M2X-T; See page 8.650.1

SYMBOLS

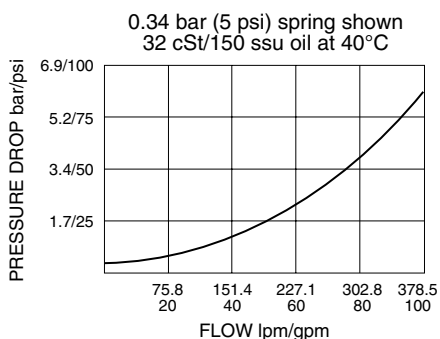
USASI:



ISO:

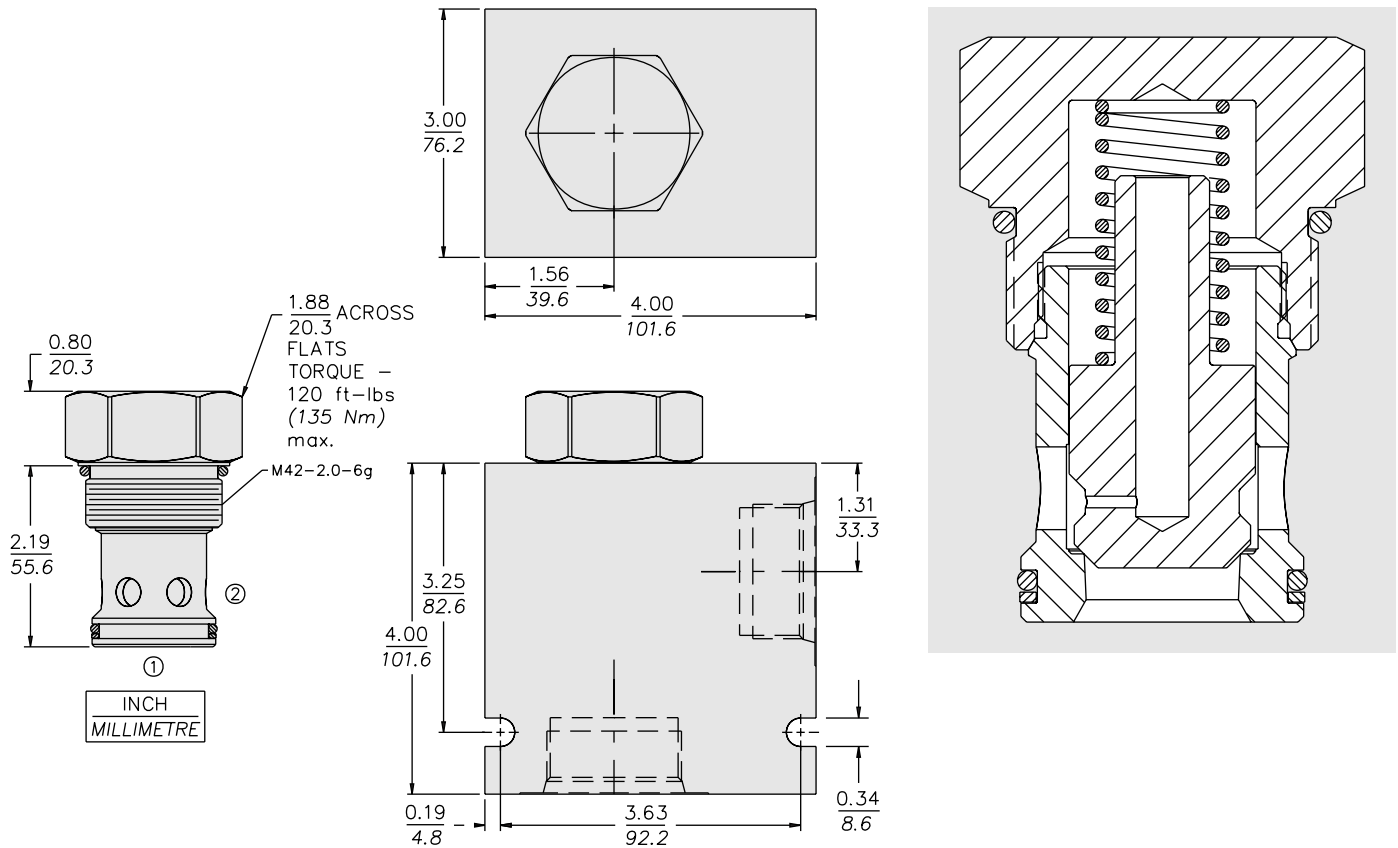


PERFORMANCE (Cartridge Only)



CV42-M20

DIMENSIONS



MATERIALS

Cartridge: Weight: 0.43 kg. (0.95 lbs.); Steel with hardened work surfaces; Zinc-plated exposed surfaces; Buna N O-rings and polyester elastomer back-ups standard.

Standard Ported Body: Weight: 0.85 kg. (1.88 lbs.); Anodized high-strength 6061 T6 aluminum alloy, rated to 240 bar (3500 psi). See page 8.016.1. Ductile iron and steel bodies available; dimensions may differ; consult factory.

TO ORDER

| | | | |
|-------------------|------------|----------------------------|------------------|
| CV42-M20 - | | Bias Spring (Crack) | |
| Porting | | 5 | 0.35 bar (5 psi) |
| Cartridge Only | 0 | 15 | 1.0 bar (15 psi) |
| SAE 20 | 20T | 30 | 2.1 bar (30 psi) |
| | | 60 | 4.1 bar (60 psi) |
| | | Seals | |
| | | N | Buna N (Std.) |
| | | V | Fluorocarbon |