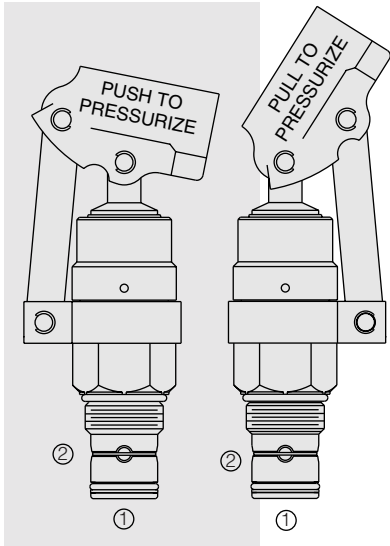


# HOUSINGS AND ACCESSORY PRODUCTS

## HP16-21 Hand Pump



### DESCRIPTION

A screw-in, cartridge-style, push or pull type hand pump with two built-in checks.

### OPERATION

The HP16-21 provides hydraulic flow to 1.3 cu. in. per stroke, at pressures to 96 bar (1500 psi).

**Note:** As with any mechanical hydraulic actuator (piston rods, rotating pump shaft, etc.) the shaft will become coated with a minute amount of oil from the internal high pressure system. The rod protruding from the hand pump may feel damp with oil after use. This is desirable because the oil coating serves to lubricate the shaft seal, reducing friction and assuring extended seal life.

### FEATURES

- Hardened parts for long life.
- Handle Beam rotates 360°
- Push or pull linkage standard.
- Heavy duty construction.
- Industry common cavity.
- Displacement up to 21.3 cc (1.3 cu in.) per stroke.

### RATINGS

**System Pressure:** 207 bar (3000 psi)

**Pressure Generated by HP16-21:** 96 bar (1500 psi) maximum

**Proof Pressure:** 345 bar (5000 psi)

**Internal Leakage:** From port ② to the inside of the pump: 5 drops/minute (0.25 cc/minute) max. at 207 bar (3000 psi)

**Suction Pressure:** 194 mm Hg (7.6 in. Hg, 104 in. H<sub>2</sub>O) less than atmospheric pressure

**Temperature:** -40 to 120°

**Filtration:** See page 9.010.1

**Fluids:** Mineral-based or synthetics with lubricating properties at viscosities of 7.4 to 420 cSt (50 to 2000 ssu)

**Installation:** No restrictions; See page 9.020.1

**Cavity:** VC16-2; See page 9.116.1

**Cavity Tool:** CT16-2XX; See page 8.600.1

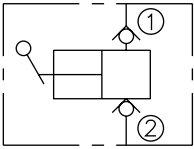
**Seal Kit:** SK16-2X-T; See page 8.650.1

**Seal Rating:** 125,000 cycles

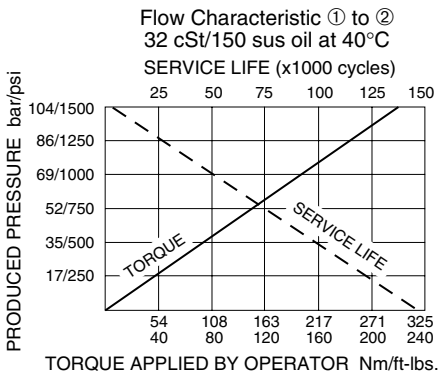
**Handle Kit:** 16 in. handle, 2.65 kg. (1.2 lbs.), Part no. 6502340

### SYMBOLS

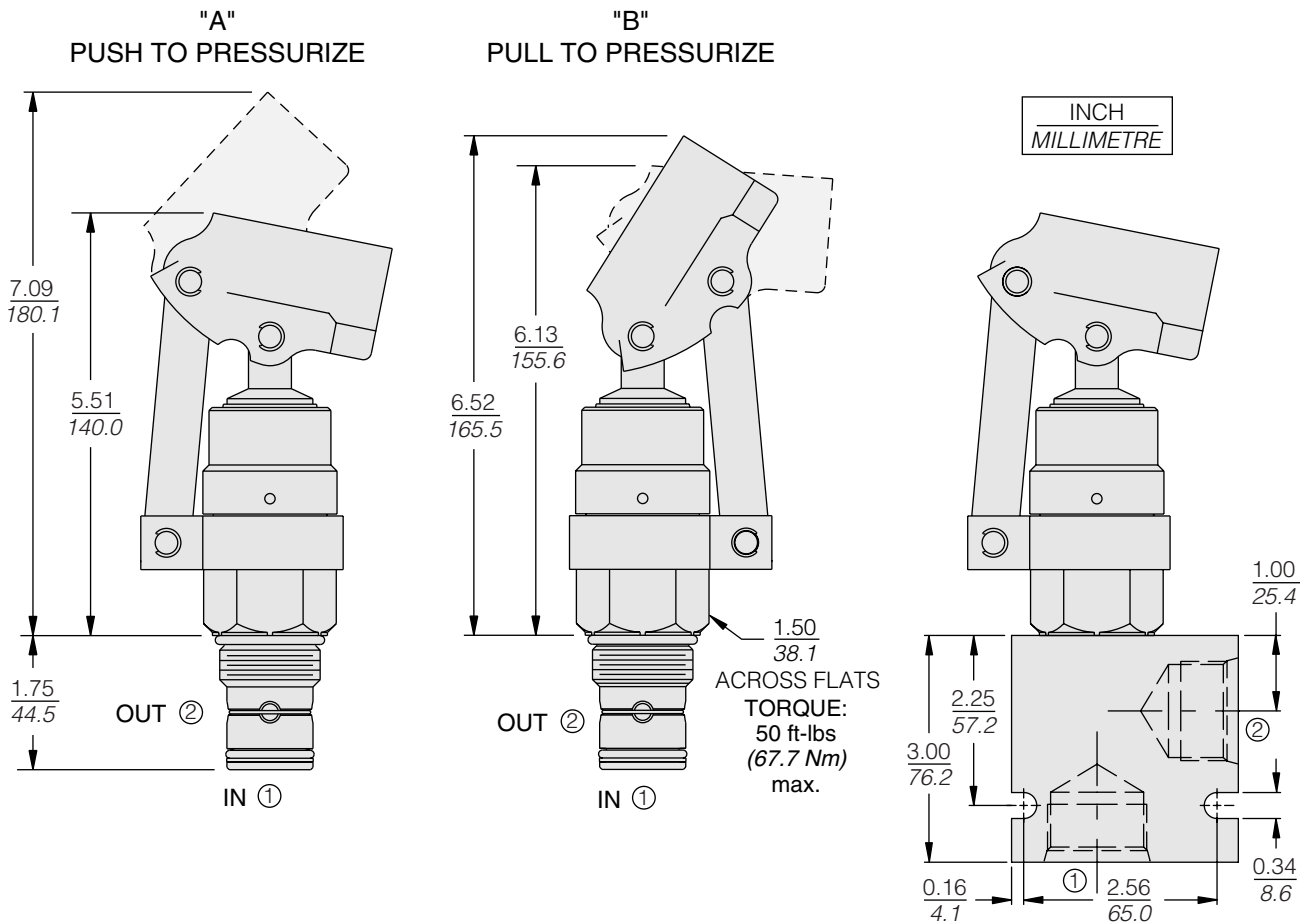
#### USASI/ISO:



### PERFORMANCE (Cartridge Only)



## DIMENSIONS



## MATERIALS

**Cartridge:** Weight: 1.27 kg. (2.8 lbs.); Steel with hardened work surfaces. Zinc-plated exposed surfaces. Buna N O-rings and polyester elastomer back-ups standard.

**Standard Ported Body:** Weight: 0.57 kg. (1.25 lbs.); Anodized high-strength 6061 T6 aluminum alloy, rated to 240 bar (3500 psi); See page 8.016.1. Ductile iron and steel bodies available; dimensions may differ; consult factory.

## TO ORDER

HP16-21 - -

### \*\*Push or Pull

Push Handle Actuation **A**  
Pull Handle Actuation **B**

\*Shipped as kit for installation

### Seals

**N** Buna N (Std.)  
**V** Fluorocarbon

### Porting

**0** Cartridge Only  
**12T** SAE 12  
**16T** SAE 16  
**6B** 3/4 in. BSP\*  
**8B** 1 in. BSP\*

\*BSP Body;  
U.K. Mfr. Only