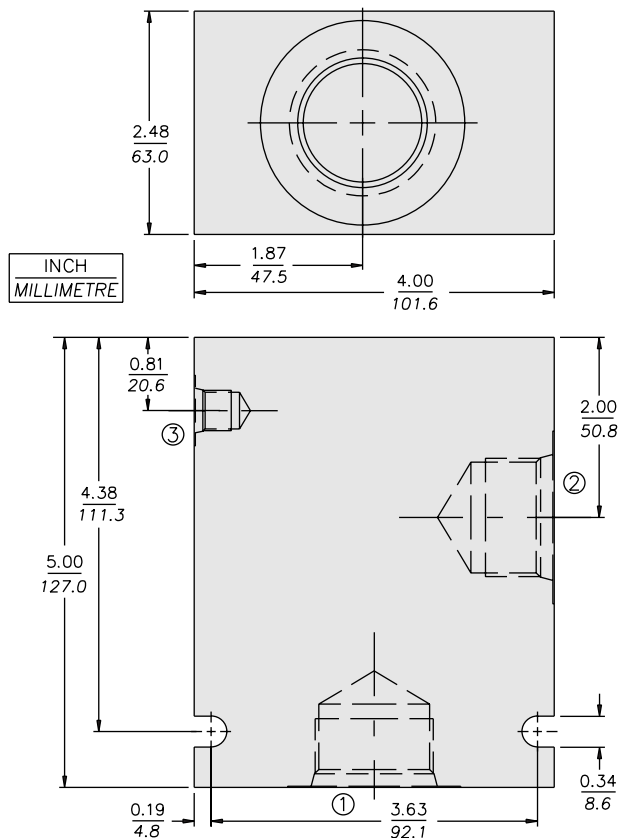


HOUSINGS AND ACCESSORY PRODUCTS

Series 20 Valve Housings

3-WAY SHORT



H20S3A with SAE 16 Porting

SERIES 20 3-WAY SHORT HOUSINGS						
Code	Part No.	Material	Port 1	Port 2	Port 3	Mfg. Loc.
16T	7023130	Alum.	SAE 16	SAE 16	SAE 6	U.S.
16T	7153210	Ductile	SAE 16	SAE 16	SAE 6	U.S.
16T	7072570	Steel	SAE 16	SAE 16	SAE 6	U.S.
16T	7072580	Durabar	SAE 16	SAE 16	SAE 6	U.S.

Note: Illustrations and dimensions shown on these pages are for Aluminum housings only. Ductile Iron and Steel housings are dimensionally different. Consult factory.

HYDRAFORCE STANDARD VALVE HOUSINGS			
MATERIAL	OPERATING PRESSURE	PORTS	MFG. LOCATION
Aluminum, 6061 T6511, Clear Anodized	240 bar (3500 psi)	SAE	U.S.
Aluminum, 6082 TF, Gold Tint	240 bar (3500 psi)	BSP	U.K.
Ductile Iron,	350 bar (5000 psi)	SAE	U.S.
Ductile Iron,	350 bar (5000 psi)	BSP	U.K.
Steel, Low carbon	350 bar (5000 psi)	SAE	U.S.
Steel, 220 M 07, Zinc Plated	350 bar (5000 psi)	BSP	U.K.