



TIPPER PACKS



SAVERY HYDRAULICS

Saverly Hydraulics is a leading expert in the design and manufacture of hydraulic solutions including turnkey projects, electro-hydraulic control systems and small individual units such as power packs for tipper trucks.

While this pack has been designed with tippers in mind, derivatives can be used for other applications including:

- TAIL LIFTS
- PASSENGER LIFTS
- SCISSOR LIFTS
- FORKLIFTS
- ACCESS LIFTS
- AGRICULTURAL APPLICATIONS
- MATERIAL HANDLING EQUIPMENT

We also design custom power packs to suit specific customer requirements.

All our packs are manufactured at our premises in Coventry and every pack is fully tested prior to dispatch.

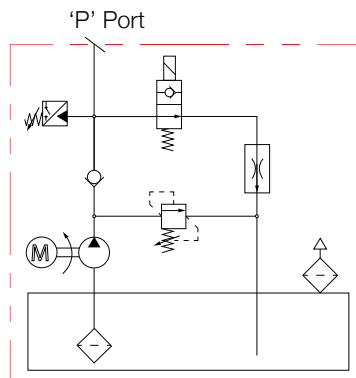


SPECIFICATION

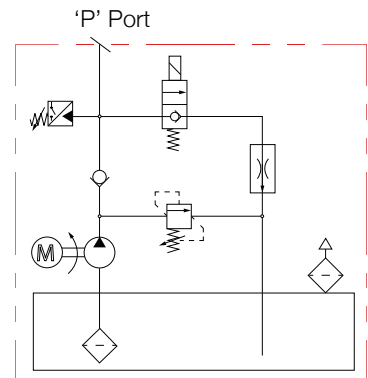
- ▶ 1.6KW, 12vdc and 2.2KW, 24vdc electric motor complete with relay and plastic motor cover.
- ▶ A range of reservoirs complete with suction strainer and filler breather.
- ▶ Horizontal or vertical mounting options.
- ▶ Pressures of up to 200 bar and flows from 3 to 15 l/min.
- ▶ Two main relief valve options 40-100 bar and 100-200 bar.
- ▶ 12vdc and 24vdc lowering valve and P line check.
- ▶ Can be supplied suitable for all single and double acting applications.
- ▶ Push button pendants, isolators etc can be supplied as required.



CIRCUIT DIAGRAMS



Normally Open



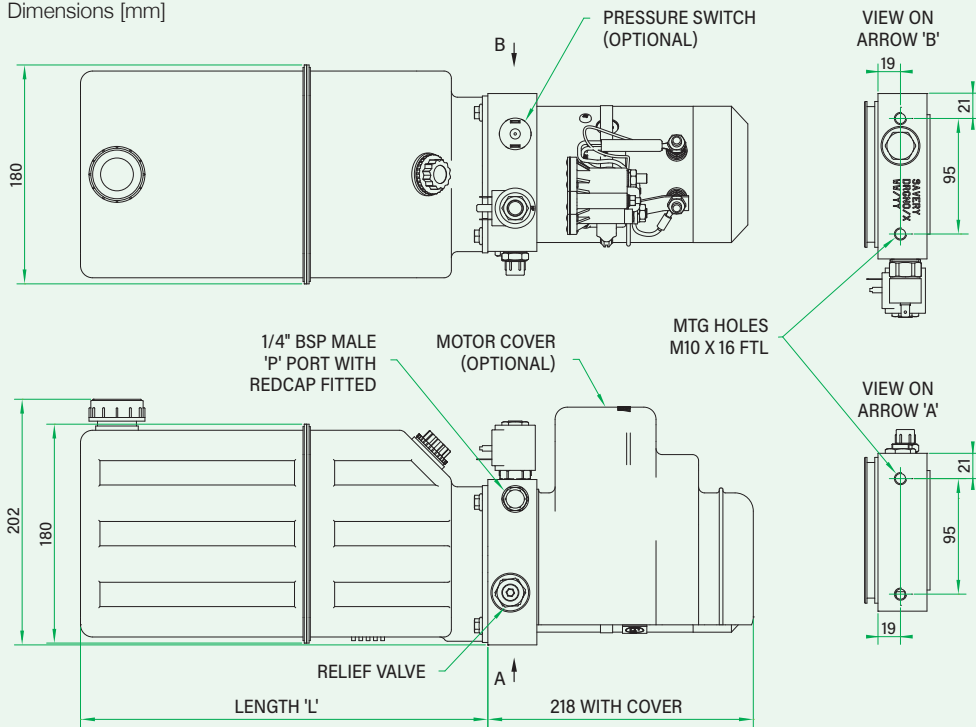
Normally Closed

Commonly used circuits for tipper packs are **normally open** and **normally closed**. Other circuit types are available on request.



DIMENSIONAL DATA

Dimensions [mm]



Tank Size (litres)	Tank Length (mm)
4	200
5	290
6	335
8	440
10	530
12	550

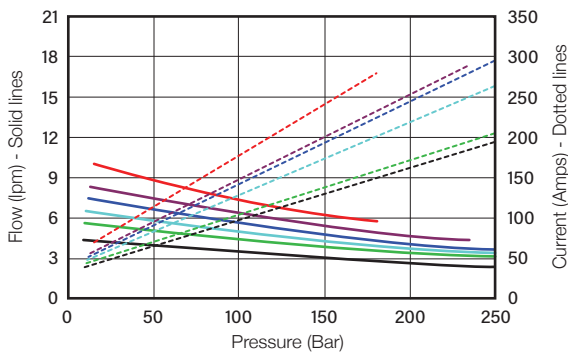
6 Standard



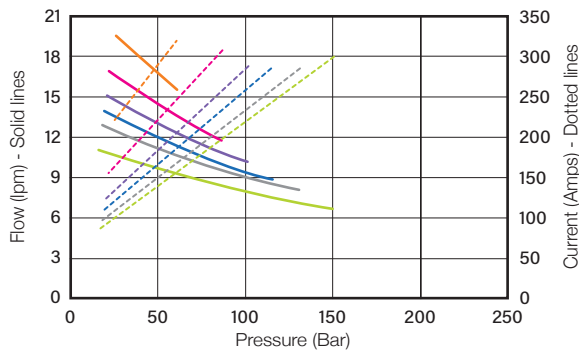
PERFORMANCE DATA

12V 1.6KW Motor

1.1cc to 2.7cc Pumps



3.2cc to 8.0cc Pumps

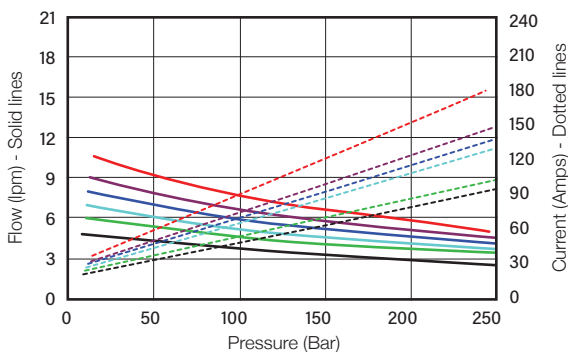


Pump Capacities

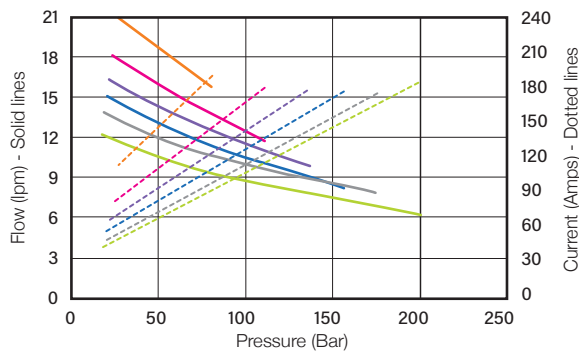
- 1.1cc
- 1.3cc
- 1.6cc
- 1.8cc
- 2.1cc
- 2.7cc
- 3.2cc
- 3.7cc
- 4.2cc
- 4.8cc
- 5.8cc
- 8.0cc

24V 2.2KW Motor

1.1cc to 2.7cc Pumps



3.2cc to 8.0cc Pumps



Savery have a policy of continual improvement and details may change without notice.

All of our hydraulic packs can be customised to fit specific applications. Please contact our sales team on **024 7664 5555** for help in finding a solution.



T A Savery & Co Limited, Grovelands, Longford Road, Exhall, Coventry CV7 9NE
 tel +44 (0)24 7664 5555 fax +44 (0)24 7636 6879 email sales@savery.co.uk web savery.co.uk

Company Reg No: 00272170 Issue 1 February 2020



Savery products & systems are audited & approved to ISO 9001 & ISO 14001.